

20th International Congress of Neuropathology

ICN2023



13–16 September 2023

BERLIN

www.icn2023.de

hybrid

PROGRAM



Table of content

Organisation and imprint	3
Welcome note.....	4
Program overview	
Education Day Tuesday, 12 th September.	5
Wednesday, 13 th September.....	6
Thursday, 14 th September	7
Friday, 15 th September.....	8
Saturday, 16 th September	9
Scientific program	
Education Day Tuesday, 12 th September.	10
Wednesday, 13 th September.....	15
Thursday, 14 th September	18
Friday, 15 th September.....	25
Saturday, 16 th September	32
ePoster sessions	
ePoster Session I, 14 th September.....	35
ePoster Session II, 15 th September.....	39
ePoster self study	
Neurooncology.	44
Neurodegeneration	51
Neuroimmunology.....	56
Muscle and Nerve.....	58
Epilepsy	59
Other fields of neuropathology or method development	60
Meetings	63
Social program	64
Sponsors and exhibitors Supporter Media cooperations.....	65
Floor plan	66
General information	68
General information on digital participation	69
Invited speakers	72
Program committee.....	76

Venue

Langenbeck-Virchow-Haus
Luisenstraße 58/59
10117 Berlin

Congress website

www.icn2023.de



Hosting societies

International Society of Neuropathology (ISN)

German Society of Neuropathology and Neuroanatomy (DGNN)

Congress chairs

Congress president

Prof. Dr. David Capper
Department of Neuropathology
Charité Berlin (Campus Charité Mitte)

Vice president

Prof. Dr. Frank Heppner
Department of Neuropathology
Charité Berlin (Campus Charité Mitte)

Local organising committee

David Capper	Lisa Objartel
Hans-Hilmar Goebel	Helena Radbruch
Frank Heppner	Simone Schmid
Arend Koch	Werner Stenzel
Marlene Oberwahrenbrock	

Professional congress organiser

Dorothee Gröninger / Jessica Kolb
Carl-Pulfrich-Straße 1
07745 Jena, Germany
icn2023@conventus.de | www.conventus.de

Design/Layout

Layout	Conventus Congressmanagement & Marketing GmbH
Editorial Deadline	7 September 2023

Dear colleagues and friends



© Julia Prager



© Goetz Schleser

On behalf of the German Society for Neuropathology and Neuroanatomy (DGNN) and the International Society of Neuropathology (ISN) it is our great pleasure to welcome all of you to the 20th International Congress of Neuropathology in Berlin!

Over the last year, the ICN program committee has been drafting a broad scientific program that showcases recent findings and topics across all major fields of diagnostic and experimental neuropathology with a focus on neuro-oncology, neurodegeneration, muscle & nerve and neuro-inflammation. We are very proud of our program and the variety of topics we are able to cover, with sessions dedicated to methodology that will likely have a strong impact on the future of neuropathology (e. g. single cell RNA sequencing and proteomics) as well as sessions on publishing in neuropathology, amongst others.

In addition to our scientific congress program, we offer a pre-congress Education Day with workshops on Tuesday, 12th September, which is fully booked, and the EVEREST Pre-Congress Symposium on low-grade glial and glioneuronal tumors, which takes place on Wednesday morning 13th September.

We are very happy that we were able to enlist an extensive group of international expert lecturers as well as an impressive number of abstracts from our scientific community that will share insight from many different areas of our fascinating discipline. We are very much looking forward to your scientific presentations!

As the capital of Germany, Berlin is a vibrant city that offers a wide range of cultural and culinary experiences that is well worth a visit on its own. If you are planning to spend a few extra days in Berlin – the organising committee has compiled a list of their favourite sights and places. Take a look at the congress homepage and get inspired! Berlin is easily accessible by train or via the newly opened Berlin Brandenburg (BER) airport. The congress will be held in the historic Langenbeck-Virchow-House, just across the road from Charité Hospital, one of Europe's largest medical centres.

We would also like to welcome our digital participants! Digital participation provides you with the scientific program in livestream from September 13th-16th, 2023! Via the digital congress platform you can join the stream at any time, ask written questions, chat with the other digital participants and view the ePosters in self-study. The program takes place live in Berlin, thus Central European Summer Time. However, if you missed any content, most of the sessions will be available on-demand for a month after video editing for both digital and on-site participants (subject to speakers' permission).

We are delighted to welcome you all – whether in person or digitally – to our ICN 2023 in Berlin and look forward to this memorable meeting for the international neuropathology community!

David Capper, MD
Congress President ICN 2023

Frank Heppner, MD
Congress Vice-President ICN 2023

Robert Koch (5th floor)

August Bier (5th floor)

Education Day*

09:00–10:15	09:00–10:15
Workshop 1 Demyelinating diseases <p>p. 10</p>	Workshop 2 Electron microscopy <p>p. 10</p>
10:15–10:30 AM break	
10:30–11:45	10:30–11:45
Workshop 3 The new WHO classification of pituitary adenoma / pitNET: consequences for daily diagnostic practice <p>p. 10</p>	Workshop 4 Myositis <p>p. 10</p>
11:45–12:45	
Lunch break	
12:45–14:00	12:45–14:00
Workshop 5 Brain tumor diagnostics in the era of NGS <p>p. 11</p>	Workshop 6 Neuropathology of neurodegenerative diseases <p>p. 11</p>
14:15–15:30	14:15–15:30
Workshop 7 DNA-methylation profiling for CNS tumors: expert real life experience including “EPIC fails” <p>p. 11</p>	Workshop 8 Clinico-pathological conference in neuroinfectious diseases <p>p. 12</p>
15:30–15:45 PM break	
15:45–17:00	15:45–17:00
Workshop 9 DNA-methylation profiling beyond the brain with relevance for the neuropathologist <p>p. 12</p>	Workshop 10 Slide session myopathology <p>p. 12</p>
17:15–18:15	17:15–18:15
Workshop 11 Prion diseases <p>p. 13</p>	Workshop 12 Slide session nerve pathology <p>p. 13</p>

Lecture Hall (2 nd floor)	B. v. Langenbeck (1 st floor)	ePoster
09:00–10:30		
EVEREST Pre-Congress Symposium		
On low-grade glial and glioneuronal tumors - Session 1* Pediatric LGGNTs – Omics, Diagnostics & Microenvironment interactions p. 14		
10:30-10:50 AM break EVEREST		
10:50–12:10		
EVEREST Pre-Congress Symposium		
On low-grade glial and glioneuronal tumors - Session 2* Pediatric LGGNTs – Biology of MAPK Signaling & Pre-clinical Models p. 14		
12:10-13:00		
Lunch break EVEREST (1st floor)		
13:00–13:30		
Opening ceremony p. 15		
13:30–14:30		
Session 1 - Cross-field		
Moving forward: Neuropath. highlights since ICN 2018 p. 15		
14:30-15:00		
PM break		
15:00–16:30	15:00–16:30	15:00–18:15
Session 2 - Neurooncology cIMPACT-NOW: Lessons learned & what's new p. 16	Session 3 - Muscle and nerve Nerve Pathology p. 16	ePoster self study
16:45–18:15	16:45–18:15	
Session 4 - Neurodegeneration Molecular mechanism of neurodegenerative diseases p. 16	Session 5 - Neuroimmunology Demyelinating Diseases p. 17	
18:30–20:00		
Welcome Reception (Ground and 1 st floor)* p. 64		

7

Lecture Hall (2 nd floor)	B. v. Langenbeck (1 st floor)	ePoster
09:00–10:30	09:00–09:45	09:00–12:45
Session 15 - Cross-field Reshaping disease concepts 2: Proteomics in neuropathology p. 25	Session 16 - Muscle & nerve Congenital & other hereditary myopathies p. 25 09:50–10:30 Session 17 - Epilepsy Abstract highlights p. 26	ePoster self study
10:30–11:00		
AM break		
11:00–12:30	11:00–12:30	
Session 18 - Neurooncology Meningiomas and other non-glial tumors p. 26	Session 19 - Neurodegeneration Franz Nissl award and neurodegeneration abstracts highlights p. 27	
12:30–13:45	12:35–13:35	p. 44
Lunch break	Industrial Symposium p. 65	12:45–13:30 ePoster sessions II* p. 39
13:45–15:15	13:45–15:15	ePoster self study
Session 20 - Cross-field Scientific Debate p. 28	Session 21 - Neuroimmunology SARS-CoV-2 and brain barriers p. 28	
15:15–15:45		
PM break		
15:45–17:15	15:45–17:15	
Session 22 - Neurodegeneration Emerging interventions and diagnostics p. 29	Session 23 - Neurooncology AOSNP Guidelines for Adapting Diagnostic Approaches for Practical Taxonomy in Resource-Limited Regions (AOSNP-ADAPTR) p. 29	
17:30–19:00	17:30–19:00	
Session 24 - Neurooncology Glial and glioneuronal tumors p. 30	Session 25 - Muscle and nerve Myositis p. 31	p. 44
20:00–01:00		
Social Evening - Restaurant HABEL*	p. 64	

Lecture Hall (2 nd floor)	B. v. Langenbeck (1 st floor)
09:00–10:15 Session 26 - Neurooncology Rapid intra- and postoperative diagnostics <p>p. 32</p>	09:00–10:15 Session 27 - Developmental Developmental and childhood disorders in neuropathology <p>p. 32</p>
10:15-10:30 AM break	
10:30–11:45 Session 28 - Neurodegeneration Neuroimmunology meets neurodegeneration: commonalities and differences <p>p. 32</p>	10:30–11:45 Session 29 - Developmental & other Developmental disorders abstracts and other abstract highlights <p>p. 33</p>
11:50–12:45 Closing ceremony Awards and closing ceremony <p>p. 33</p>	

*These program elements are for in-person participation only.

Education Day - Workshop
Break
Pre-Congress Symposium
Scientific session - Cross-field
Scientific session - Neuroimmunology
Scientific session - Neurooncology
Scientific session - Developmental
Scientific session - Neurodegeneration
Scientific session - Muscle and nerve
Scientific session - Epilepsy
ePoster self study
ePoster session
Social programme
General assembly
Closing/ opening ceremony
Industrial symposium

09:00–10:15 Workshop 1 – Demyelinating diseases

Room Robert Koch (5th floor, 90 seats)

Chair Helena Radbruch (Berlin/DE)

09:00 Differential diagnosis of demyelinating CNS lesions
Christine Stadelmann (Goettingen/DE)

09:00–10:15 Workshop 2 – Electron microscopy

Room August Bier (5th floor, 45 seats)

Chair Carsten Dittmayer (Berlin/DE)

09:00 Diagnostic electron microscopy in infectious diseases
Michael Laue (Berlin/DE)

09:25 Novel techniques in electron microscopy
Matthias Ochs (Berlin/DE)

09:50 Applied EM in neuropathology
Carsten Dittmayer (Berlin/DE)

10:15–10:30 AM break

Foyer (5th floor)

10:30–11:45 Workshop 3 – The new WHO classification of pituitary adenoma / pitNET – consequences for daily diagnostic practice

Room Robert Koch (5th floor, 90 seats)

Chair Simone Schmid (Berlin/DE)

10:30 Overview of the new pituitary adenoma / pitNET WHO classification
Maria-Beatriz Lopes (Charlottesville, VA/US)

11:00 Pathological case presentations of pituitary adenoma / pitNETs from routine practice
Simone Schmid (Berlin/DE)

11:20 Impact of new pituitary WHO classification on clinical management
Linus Haberbosch (Berlin/DE)

10:30–11:45 Workshop 4 – Myositis

Room August Bier (5th floor, 45 seats)

Chair Werner Stenzel (Berlin/DE)

10:30 Infectious myositis
Nandeesh Bevinahalli Nanjegowda (Bangalore/IN)

11:00 Autoimmune myositis
Werner Stenzel (Berlin/DE)

11:30 General discussion

- 11:45–12:45 **Lunch break**
Foyer (5th floor)
- 12:45–14:00 **Workshop 5 – Brain tumor diagnostics in the era of NGS**
Room Robert Koch (5th floor, 90 seats)
Chair Leonille Schweizer (Frankfurt a. M./DE)
- 12:45 Optimal execution and interpretation of NGS DNA & RNA analysis for brain tumor diagnostics
Bastiaan Tops (Utrecht/NL)
- 13:30 Practical examples for routine NGS interpretation and reporting
Leonille Schweizer (Frankfurt a. M./DE)
- 12:45–14:00 **Workshop 6 – Neuropathology of neurodegenerative diseases**
Room August Bier (5th floor, 45 seats)
Chair Frank L. Heppner (Berlin/DE)
- 12:45 Molecular basis for phenotypic heterogeneity in TDP-43 proteinopathies
Manuela Neumann (Tuebingen/DE)
- 14:15–15:30 **Workshop 7 – DNA-methylation profiling for CNS tumors – expert real life experience including “EPIC fails”**
- Room Robert Koch (5th floor, 90 seats)
Chair David Capper (Berlin/DE)
- 14:15 Five years experience with the Heidelberg brain tumor classifier
David Capper (Berlin/DE)
- 14:45 Utility of multiple and complementary classifiers to resolve difficult cases in CNS tumor diagnostics
Kenneth Aldape (Bethesda, MD/US)
- 15:10 General discussion

- 14:15–15:30 **Workshop 8 – Clinico-pathological conference in neuroinfectious diseases**
Room August Bier (5th floor, 45 seats)
Chair Helena Radbruch (Berlin/DE)
- 14:15 Clinico-pathological conference on infectious diseases
 Anita Mahadevan (Bangalore/IN)
- 15:30–15:45 **PM break**
 Foyer (5th floor)
- 15:45–17:00 **Workshop 9 – DNA-methylation profiling beyond the brain with relevance for the neuropathologist**
Room Robert Koch (5th floor, 90 seats)
Chair Philipp Euskirchen (Berlin/DE)
- 15:45 Introduction to hematologic DNA methylation classifier and effort for pan-cancer classifier
 Kenneth Aldape (Bethesda, MD/US)
- 16:25 Outlook – Nanopore sequencing for DNA methylation analysis
 Philipp Euskirchen (Berlin/DE)
- 15:45–17:00 **Workshop 10 – Slide session myopathology**
Room August Bier (5th floor, 45 seats)
Chair Werner Stenzel (Berlin/DE)
- 15:45 Slide seminar with illustrative cases
 Steven Moore (Iowa City, IA/US)
- 16:15 Slide seminar with illustrative cases
 Werner Stenzel (Berlin/DE)
- 16:45 General discussion

17:15–18:15 Workshop 11 – Prion diseasesRoom Robert Koch (5th floor, 90 seats)

Chair Frank L. Heppner (Berlin/DE)

17:15 CJD subtype identification by neuropathology patterns
Ellen Gelpi (Vienna/AT)

17:45 CJD subtype identification by neuropathology patterns
Piero Parchi (Bologna/IT)

17:15–18:15 Workshop 12 – Slide session nerve pathologyRoom August Bier (5th floor, 45 seats)

Chair Hans-Hilmar Goebel (Berlin/DE)

17:15 Slide seminar with illustrative cases
Jean-Michel Vallat (Limoges/FR)

17:45 Slide seminar with illustrative cases
Joachim Weis (Aachen/DE)

09:00–10:30 Room EVEREST Pre-Congress Symposium – On low-grade glial and glioneuronal tumors – Session 1
Lecture Hall (2nd floor) – large auditorium, 500 seats

09:00 Introduction
David T. W. Jones (Heidelberg/DE), Pratiti Bandopadhyay (Boston, MA/US)

Pediatric LGGNTs – Omics, Diagnostics & Microenvironment interactions

09:10 Keynote – FGFR alterations in pLGGs'
Pratiti Bandopadhyay (Boston, MA/US)

09:50 Heterogeneity of transcriptional programmes in pediatric low-grade gliomas at the single cell level
Ashwyn Augustine Perera (Heidelberg/DE)

10:10 LOGGIC reference pathology for low-grade gliomas in Germany (experience of the last 4 years)
Arend Koch (Berlin/DE)

10:30–10:50 AM break EVEREST symposium
Foyer/ Industrial exhibition

10:50–12:10 Room EVEREST Pre-Congress Symposium – On low-grade glial and glioneuronal tumors – Session 2
Lecture Hall (2nd floor) – large auditorium, 500 seats

Pediatric LGGNTs – Biology of MAPK Signaling & Pre-clinical Models

10:50 Keynote – Beyond BRAF – insights from preclinical models of other pLGG drivers
Keith L. Ligon (Boston, MA/US)

11:30 Preventing recurrence – targeting molecular mechanisms driving tumor growth rebound after MAPK inhibitor withdrawal in pediatric low-grade glioma
Daniela Kocher (Heidelberg/DE)

11:50 MAPK and More – signalling networks in paediatric low-grade glioma
Denise Sheer (London/UK)

12:15–13:00 Lunch break EVEREST symposium
Foyer 1st floor

13:00–13:30 Opening ceremony

Room Lecture Hall (2nd floor) – large auditorium, 500 seats

13:00 Welcoming address David Capper (Congress President)
David Capper (Berlin/DE)

13:05 Welcoming address Seth Love (ISN President)
Seth Love (Bristol/UK)

13:10 Welcoming address Till Acker (DGNN President)
Till Acker (Giessen/DE)

13:15 Welcoming address Joachim Spranger (Dean of Charité Berlin)
Joachim Spranger (Berlin/DE)

13:22 Welcoming address Otmar Wiestler (President of Helmholtz Association)
Otmar Wiestler (Berlin/DE)

13:30–14:30 Session 1 – Cross-field – Moving forward – Neuropathological highlights since ICN 2018

Room Lecture Hall (2nd floor) – large auditorium, 500 seats

Chairs David Capper (Berlin/DE), Seth Love (Bristol/UK)

13:30 Neurodegeneration
S01-OT-T1 Thomas J. Montine (Stanford, CA/US)

13:45 Muscle and Nerve
S01-OT-T2 Ichizo Nishino (Tokyo/JP)

14:00 Neurooncology
S01-OT-T3 Vaishali Suri (New Delhi/IN)

14:15 Neuroimmunology
S01-OT-T4 Romana Höftberger (Vienna/AT)

14:30–15:00 PM break

Foyer/ Industrial exhibition

Scientific program | Wednesday, 13th September

15:00–16:30	Session 2 – Neurooncology – cIMPACT-NOW – Lessons learned & what's new
Room	Lecture Hall (2 nd floor) – large auditorium, 500 seats
Chairs	Dominique Figarella-Branger (Marseille/FR), Laveniya Satgunaseelan (Sydney/AU)
15:00	A guide for guiding the guidelines – WHO, cIMPACT, ICCR, etc.
S02-NO-T1	David Louis (Cambridge, MA/US)
15:30	cIMPACT – what's next
S02-NO-T2	Pieter Wesseling (Amsterdam/NL)
16:00	Emerging new CNS tumor types
S02-NO-T3	David T. W. Jones (Heidelberg/DE)
16:20	Pineal region high grade neuroepithelial tumors with NTRK fusions belonging to the novel methylation class "Diffuse High Grade Glioma, IDH-wildtype, subtype E" (HGG_E) – a distinct clinicopathological and molecular presentation
S02-NO-A1	Felipe D'Almeida Costa (Sao Paulo/BR)
15:00–16:30	Session 3 – Muscle and nerve – Nerve Pathology
Room	Bernhard von Langenbeck (1 st floor) – small auditorium, 90 seats
Chairs	Jacqueline Mikol (Fontenay-aux-Roses/FR), Regina R. Reimann (Zurich/CH)
15:00	Pathology explains various mechanisms in autoimmune inflammatory neuropathies
S03-MN-T1	Jean-Michel Vallat (Limoges/FR)
15:30	Hereditary Neuropathies – Neuropathological insight from nerve biopsies
S03-MN-T2	Joachim Weis (Aachen/DE)
16:00	Myelin protein zero mutation-related hereditary neuropathies – neuropathological insight from a new nerve biopsy cohort
S03-MN-A263	Juliane Bremer (Aachen/DE)
16:15	Repair strategies in the injured peripheral nervous system
S03-MN-A264	Ruth Martha Stassart (Leipzig/DE)
16:45–18:15	Session 4 – Neurodegeneration – Molecular mechanism of neurodegenerative diseases
Room	Lecture Hall (2 nd floor) – large auditorium, 500 seats
Chairs	Andrew F. Teich (New York, NY/US), Liisa Myllykangas (Helsinki/FI)
16:45	Neurodegenerative diseases and Cognitive Impairment
S04-ND-T1	Thomas J. Montine (Stanford, CA/US)
17:15	The Global Genetics of Alzheimer Disease: Pathway to Prevention and Treatment across Ancestries
S04-ND-T2	Margaret A. Pericak-Vance (Miami, FL/US)

- 17:45 LATE-NC exacerbates tau pathology and seeding potential in Alzheimer's Disease
S04-ND-A140 Sandra Tomé (Leuven/BE)
- 17:55 Structures of α -synuclein filaments from human brains
S10-ND-A144 Yang Yang (Cambridge/UK)
- 18:05 The role of karyopherin abnormalities in the onset and progression of
S04-ND-A142 synucleinopathies
Daulet Sharipov (London/UK)
- 16:45–18:15 Session 5 – Neuroimmunology – Demyelinating Diseases**
Room Bernhard von Langenbeck (1st floor) – small auditorium, 90 seats
Chairs Doron Merkler (Geneva/CH), Nina Fransen (Utrecht/NL)
- 16:45 Neuropathology of NMOsD
S05-NI-T1 Christine Stadelmann (Goettingen/DE)
- 17:10 Early neurodegenerative pathways in progressive MS
S05-NI-T2 Max Kaufmann (Hamburg/DE)
- 17:35 Myelin insulation as a risk factor for axonal degeneration in autoimmune demyelinating disease
S05-NI-A226 Mar Bosch Queralt (Leipzig/DE)
- 17:45 Neuroprotective effect of a ganglioside-containing drug on allergic autoimmune encephalomyelitis
S05-NI-A227 Hasmik Zanginyan (Yerevan/AM)
- 17:55 Multimodal non-invasive longitudinal retinal imaging reveals optic neuritis precedes retinal pathology
S05-NI-A228 in experimental autoimmune encephalomyelitis
Raphael Raspe (Berlin/DE)
- 18:05 Progressive multifocal leukoencephalopathy (PML), diagnostic approach in a country with a developing
S05-NI-A229 economy – a case report
Shirley Lorena Rojas-Soto (Medellín/CO)
- 18:15–18:25 Group photo in the lecture hall**
- 18:30–20:00 Welcome Reception (p. 63)**
Foyer/ Industrial exhibition

Scientific program | Thursday, 14th September

09:00–10:30 Session 6 – Neurooncology – Pediatric high-grade glial and embryonal tumors

Room Lecture Hall (2nd floor) – large auditorium, 500 seats
Chairs Jason Chiang (Memphis, TN/US), Sebastian Waszak (Oslo/NO)

09:00 Impact of new embryonal tumor classes on treatment decisions
S06-NO-T1 Katja von Hoff (Aarhus/DK)

09:20 Increasing accessibility of DNA methylation analysis by the Molecular Neuropathology (MNP)
S06-NO-T2 Outreach Consortium
Olfat Khdair-Ahmad (Heidelberg/DE)

09:40 Parent-of-origin-dependent somatic evolution of GNAS-associated medulloblastoma
S06-NO-A2 Sophie Mottl (Munich/DE)

09:50 Retinoblastoma in Saudi Arabia – genomic characterization of 172 cases at King Khaled Eye
S06-NO-A3 specialist hospital
Malak Abedalthagafi (Atlanta, GA/US)

10:00 A highly atypical embryonal tumor with multilayered rosettes (ETMR) versus a new entity:
S06-NO-A4 a series of 6 cases
Arie Perry (San Francisco, CA/US)

10:10 Defects of mismatch repair proteins in pediatric high grade gliomas
S06-NO-A5 Christine Haberler (Vienna/AT)

10:20 SWI/SNF ATPases as therapeutic targets in H3K27M Diffuse Midline Gliomas
S06-NO-A6 Sriram Venneti (Ann Arbor, MI/US)

09:00–10:30 Session 7 – Neuroimmunology – Encephalitis

Room Bernhard von Langenbeck (1st floor) – small auditorium, 90 seats
Chairs Helena Radbruch (Berlin/DE), Anita Mahadevan (Bangalore/IN)

09:00 Neuropathology of autoimmune encephalitis
S07-NI-T1 Romana Höftberger (Vienna/AT)

09:25 Immunopathology of antibody mediated diseases
S07-NI-T2 Adam Handel (Oxford/UK)

09:50 Progressive Encephalomyelitis with Rigidity and Myoclonus with glycine receptor and GAD65
S07-NI-A230 autoantibodies – clinico-pathological correlates and potential pathomechanisms of a rare disease
Michael Winklehner (Linz/AT)

10:00 Microglial engulfment of GABAergic interneurons in stiff-person syndrome
S07-NI-A231 Toshimasa Ikeda (Nagoya/JP)

10:10 S07-NI-A232	Role of immunoassays in the detection of onconeural antibodies – a retrospective study from an Australian laboratory Syed Ali (Adelaide/AU)
10:20 S07-NI-A233	Viral metagenomics from formalin-fixed paraffin-embedded specimens Christian Thomas (Muenster/DE)
10:30–11:00	AM break Foyer/ Industrial exhibition
11:00–12:30 Room Chairs	Session 8 – Cross-field – Reshaping disease concepts 1: Single cell technology in neuropathology Lecture Hall (2 nd floor) – large auditorium, 500 seats Ekaterina Friebe (Berlin/DE), Karlheinz Plate (Frankfurt a. M./DE)
11:00 S08-OT-T1	Single-cell, spatial and brain organoid technologies for deciphering brain complexity in health and disease Agnieszka Rybak-Wolf (Berlin/DE)
11:30 S08-OT-T2	Selective pressures that shape glioma evolution Pratiti Bandopadhyay (Boston, MA/US)
11:50 S08-NO-A35	The landscape of tumor cell states and spatial organization in H3-K27M mutant diffuse midline glioma across age and location Ilon Liu (Berlin/DE)
12:00 S08-MN-A273	A comparative single nuclei transcriptomics approach to evaluating the terminally differentiated lymphocytes in autoimmune myositis Francia Victoria De Los Reyes (Kodaira/JP)
12:10 S08-ND-A157	Single nuclei RNA-sequencing across different brain regions in Multiple System Atrophy Viktoria C. Ruf (Munich/DE)
12:20 S08-ND-A158	Studying selective vulnerability in Parkinson's Disease using spatial transcriptomics – technical appraisal and optimisation Alan King Lun Liu (Oxford/UK)

Scientific program | Thursday, 14th September

- 11:00–12:30** **Session 9 – Epilepsy – Epilepsy and Focal Cortical Dysplasia (FCD) classification**
Room Bernhard von Langenbeck (1st floor) – small auditorium, 90 seats
Chairs Homa Adle-Biassette (Paris/FR), Angelika Mühlebner (Utrecht/NL)
- 11:00 Histological perspective on FCD classification
S09-EPT1 Ingmar Blümcke (Erlangen/DE)
- 11:25 Molecular perspective on FCD classification
S09-EPT2 Eleonora Aronica (Amsterdam/NL)
- 11:50 Clinical perspective on FCD classification
S09-EPT3 Pawel Fidzinski (Berlin/DE)
- 12:10 Detection of brain somatic mutations in focal cortical dysplasia during epilepsy presurgical workup
S09-EP-A286 Sara Baldassari (Paris/FR)
- 12:20 Characterizing the hippocampal dentate gyrus involvement in temporal lobe epilepsy
S09-EP-A287 Qi Zhang (London, ON/CA)
- 12:30–13:45** **Lunch break**
Foyer/ Industrial exhibition
- 12:45–13:30** **ePoster session I** (p. 34)
- 13:45–15:15** **Session 10 – Neurodegeneration – Proteinopathies – strains & classification**
Room Lecture Hall (2nd floor) – large auditorium, 500 seats
Chairs Gabor Kovacs (Toronto, ON/CA), Catriona McLean (Melbourne/AU)
- 13:45 Molecular basis for phenotypic heterogeneity in TDP-43 proteinopathies
S10-ND-T1 Manuela Neumann (Tuebingen/DE)
- 14:15 TMEM106B in neurodegenerative disease and aging
S10-ND-T2 Ian MacKenzie (Vancouver, BC/CA)
- 14:45 The CurePSP brain bank at Mayo Clinic Florida and its contributions to research on neurodegenerative tauopathies
S10-ND-A143 Dennis Dickson (Jacksonville, FL/US)
- 14:55 Propagation of pathologic alpha-synuclein from kidney to brain
S04-ND-A141 Liam Chen (Minneapolis, MN/US)
- 15:05 Distribution of Lewy-related pathology in the brain, spinal cord, and periphery in the population-based Vantaa 85+ study – evidence for two distinct LRP types
S10-ND-A145 Liisa Myllykangas (Helsinki/FI)

13:45–15:15 Session 11 – Cross-field – The editors' perspective – Future of neuropathology journals

Room Bernhard von Langenbeck (1st floor) – small auditorium, 90 seats
 Chairs Werner Paulus (Muenster/DE), Aivi Nguyen (Rochester, NY/US)

13:45 Journal – Brain Pathology
 S11-OT-T1 Markus Glatzel (Hamburg/DE)

13:55 Journal – Free Neuropathology
 S11-OT-T2 Michel Mittelbronn (Dudelange/LU)

14:05 Journal – Acta Neuropathologica
 S11-OT-T3 Lauren Walker (Newcastle upon Tyne/UK)

14:15 Journal – Neuropathology and Applied Neurobiology
 S11-OT-T4 Tom Jacques (London/UK)

14:25 Journal – Clinical Neuropathology
 S11-OT-T5 Christian Mawrin (Magdeburg/DE)

14:35 Journal – Acta Neuropathologica Communications
 S11-OT-T6 Jason Huse (Houston, TX/US)

14:45 Journal – Neuropathology
 S11-OT-T7 Masaki Takao (Tokyo/JP)

14:55 Discussion

15:15–15:45 PM break
 Foyer/ Industrial exhibition

15:45–17:15 Session 12 – Neurooncology – Glioblastoma, IDH-wildtype

Room Lecture Hall (2nd floor) – large auditorium, 500 seats
 Chairs Daniel J. Brat (Chicago, IL/US), Sung-Hye Park (Seoul/KR)

15:45 Therapeutic resistance in gliomas
 S12-N0-T1 Keith L. Ligon (Boston, MA/US)

16:15 Patterns and evolution of structural complexity in 323 GBM whole genomes
 S12-N0-A7 Alhafidz Hamdan (Edinburgh/UK)

16:25 Clinical and molecular characterization of extracranial metastases from glioblastomas
 S12-N0-A8 Julie Jacobsen (Copenhagen/DK)

16:35 A rationale to screen Mismatch repair deficiency among adult patients with glioma – an analysis of 1225 cases
 S12-N0-A9 Franck Bielle (Paris/FR)

- 16:45
S12-NO-A10 The clinicopathological, molecular characteristics and prognosis of adult epithelioid glioblastomas : a report of 39 cases
Shaoyan Xi (Guangzhou/CN)
- 16:55
S12-NO-A11 Concurrent RB1 and P53 pathway alterations predispose to the development of primitive neuronal component in glioblastoma through the upregulation of EBF3
Pietro Luigi Poliani (Milan/IT)
- 17:05
S12-NO-A12 DNA hypomethylator phenotype remodels oncogenic glutamate metabolism in Glioblastoma
Kenta Masui (Tokyo/JP)
- 15:45–17:15** **Session 13 – Muscle and nerve – New avenues in myology and myopathology**
Room Bernhard von Langenbeck (1st floor) – small auditorium, 90 seats
Chairs Anne Schänzer (Giessen/DE), Thomas Robertson (Herston Queensland/AU)
- 15:45
S13-MN-T1 Modern approaches to study congenital myopathies
Carsten Bönnemann (Bethesda, MD/US)
- 16:15
S13-MN-T2 Oculopharyngodistal myopathy – Different from oculopharyngeal muscular dystrophy?
Ichizo Nishino (Tokyo/JP)
- 16:45
S13-MN-A265 Molecular insights in skeletal muscle under physiological condition – age versus aging
Alexander Schaiter (Giessen/DE)
- 16:55
S13-MN-A266 Investigations of the specific interferon-signature in Anti-Synthetase syndrome-associated Myositis
Corinna Preusse (Berlin/DE)
- 17:05
S13-MN-A267 Neuropathological and transcriptional analysis of PrPC overexpression-induced necrotizing myopathy
Regina R. Reimann (Zurich/CH)

17:30–19:00 Session 14 – Cross-field – Flash talks of abstract highlights

Room	Lecture Hall (2 nd floor) – large auditorium, 500 seats
Chairs	Patrick N. Harter (Munich/DE), Simon Streit (Berlin/DE)
17:30 S14-NO-A36	Mean global DNA methylation serves as independent prognostic marker in glioblastoma, IDH wildtype Alicia Eckhardt (Hamburg/DE)
17:36 S14-OT-A327	Conumee 2.0 – enhanced copy-number variation analysis from DNA methylation arrays for humans and mice Bjarne Daenekaas (Boston, MA/US)
17:42 S14-ND-A161	Blood CNS regionally enriched extracellular vesicles carrying pTau217 for Alzheimer's Disease diagnosis and differential diagnosis Zhen Guo (Hangzhou/CN)
17:48 S14-NO-A39	Fatal outcome of a case of central neurocytoma – a rare and challenging diagnosis Anna Clarysse Medina (Angono/PH)
17:54 S14-MN-A276	Histopathological features and autophagy aspects of Ku+ myositis Corinna Preusse (Berlin/DE)
18:00 S14-ND-A159	Consistent and distinct involvement of the cranial and spinal nerves in PSP and other tauopathies Hidetomo Tanaka (Toronto, ON/CA)
18:06 S14-NO-A38	Newly designed fish MYCN/ID2 is useful to identify paediatric-type diffuse high-grade glioma, IDH- and H3-wildtype, MYCN-subtype Arnault Tauziède-Espariat (Paris/FR)
18:12 S14-ND-A163	Alterations of neuroprotective ER- co-chaperone SIL1 – disruption of autophagy and RNA binding protein homeostasis and selective neuronal vulnerability in Amyotrophic lateral sclerosis (ALS) Haihong Guo (Aachen/DE)
18:18 S14-OT-A328	Detection of structural DNA variations in pediatric brain tumors using optical genome mapping Nadezhda Kubon (Duesseldorf/DE)
18:24 S14-MN-A275	Application of serial section electron microscopy for 3D visualization of the neuromuscular junction in a patient with seronegative myasthenia gravis Carsten Dittmayer (Berlin/DE)
18:30 S14-ND-A162	Investigating ALS pathogenesis caused by distinct SOD1 strains in transgenic mouse models Thomas Brännström (Umeå/SE)

Scientific program | Thursday, 14th September

- 18:36
S14-NO-A37 Exploring Myeloid-Lymphoid interactions in Glioblastomas – NK cells as rheostats in the immune microenvironment
Roman Sankowski (Freiburg i. B./DE)
- 18:42
S14-MN-A274 Megaconial congenital muscular dystrophy associated with ichthyosis due to CHKD mutation
Istvan Bodi (London/UK)
- 18:48
S14-NO-A40 DICER-1 mutant primary intracranial sarcoma – a call for extensive molecular profiling in CNS tumours with spindle morphology
Lao I Weng (Shanghai/CN)
- 18:54
S14-ND-A160 DNA methylation differences in Alzheimer's Disease neuropathology in old age – a comprehensive brain region survey
Anna-Lena Lang (Berlin/DE)

09:00–10:30 Session 15 – Cross-field – Reshaping disease concepts 2: Proteomics in neuropathology

Room Lecture Hall (2nd floor) – large auditorium, 500 seats
 Chairs Ulrich Schüller (Hamburg/DE), Philipp Mertins (Berlin/DE)

09:00 Tumor proteomics in neuropathology
 S15-OT-T1 Andreas von Deimling (Heidelberg/DE)

09:30 Proteomics in neuromuscular disorders
 S15-OT-T2 Andreas Roos (Essen/DE)

09:50 Quantitative proteomics analysis of single brain organoids and patient-derived neurospheres
 S15-OT-A318 using TMT10plex isobaric tags
 Magno Junqueira (Rio de Janeiro/BR)

10:00 Integrated multiomic analyses of medulloblastoma using bulk proteome and DNA-methylome
 S15-NO-A32 data reveals subtype-specific targetable alterations
 Shweta Godbole (Hamburg/DE)

10:10 Spatial multi-ome mapping of therapy-induced, pathological changes in Glioblastoma at single-cell
 S15-NO-A33 resolution
 Frederic De Smet (Leuven/BE)

10:20 Diffuse glioma multiomics – epigenetic and proteomic analyses for tumor characterization and
 S15-NO-A34 biomarker detection
 Katharina J. Weber (Frankfurt a. M./DE)

09:00–09:45 Session 16 – Muscle and nerve – Congenital and other hereditary myopathies

Room Bernhard von Langenbeck (1st floor) – small auditorium, 90 seats
 Chairs Beata Sikorska (Lodz/PL), Fouzia Ziad (Hamilton/NZ)

09:00 Morphological aspects in congenital myopathies
 S16-MN-T1 Kristl Claeys (Leuven/BE)

09:25 Evaluation of clinico-pathological and genetic spectrum of RYR1 mutations in Indian cohort
 S16-MN-A268 Mehar Chand Sharma (Delhi/IN)

09:35 Anti- α -Actinin immunostaining is sensitive but non-specific as a diagnostic marker for sporadic
 S16-MN-A269 late-onset nemaline myopathy
 Mingshi Gao (Shanghai/CN)

Scientific program | Friday, 15th September

09:50–10:30 Session 17 – Epilepsy – Epilepsy abstract highlights

Room Bernhard von Langenbeck (1st floor) – small auditorium, 90 seats
Chairs José Eduardo Peixoto-Santos (São Paulo/BR), Maria Thom (London/UK)

09:50 DNA methylation classifier of Ganglioglioma with adverse clinical outcome
S17-EP-A288 Lucas Hoffmann (Erlangen/DE)

10:00 BRAF V600E mutation underlies some hippocampal and neocortical epileptogenic non-expansive
S17-EP-A289 lesions
Franck Bielle (Paris/FR)

10:10 Mild malformation of cortical development with Oligodendroglial Hyperplasia in Epilepsy
S17-EP-A290 (MOGHE) – first case series from Latin-America
Jesús Cienfuegos Meza (Mexico City/MX)

10:20 Loss of maturity and homeostatic functions in TSC astrocytes – A potential aggravator of epilepsy
S17-EP-A291 and inflammation?
Mark Luinenburg (Amsterdam/NL)

10:30–11:00 AM break

Foyer/ Industrial exhibition

11:00–12:30 Session 18 – Neurooncology – Meningiomas and other non-glial tumors

Room Lecture Hall (2nd floor) – large auditorium, 500 seats
Chairs Valeria Barresi (Verona/IT), Caterina Giannini (Rochester, MN/US)

11:00 Improved grading of meningiomas
S18-NO-T1 Felix Sahm (Heidelberg/DE)

11:25 Which meningiomas benefit most from methylation profiling?
S18-NO-A22 Fernanda Ruiz (London/UK)

11:35 Assessment of molecular biomarkers for prognostication in meningiomas
S18-NO-A23 Jyotsna Singh (New Delhi/IN)

11:45 Mitotic count and tumor grading conundrum
S18-NO-A24 Mohammad Haeri (Kansas City, MO/US)

11:54 Meningeal solitary fibrous tumor – a genome-wide DNA methylation study
S18-NO-A25 Kathryn Eschbacher (Iowa City, IA/US)

12:03 Intracranial mesenchymal tumor with FET-CREB fusion – a rare entity
S18-NO-A26 Moiom Hentok Phom (New Delhi/IN)

12:12 S18-NO-A27	Central nervous metastasis – frequency, location and the role of immunohistochemistry in identifying primary sites Cynthia Neves (Rio de Janeiro/BR)
12:21 S18-NO-A28	Brain metastasis is associated with disturbance of cerebral blood microcirculation and consecutive hypoxic-ischemic pre-metastatic niches Patrick N. Harter (Munich/DE)
11:00–12:30	Session 19 – Neurodegeneration – Franz Nissl award and neurodegeneration abstracts highlights
Room Chairs	Bernhard von Langenbeck (1 st floor) – small auditorium, 90 seats Dennis W. Dickson (Jacksonville, FL/US), Sarah Jäkel (Munich/DE)
11:00 S19-ND-T1	Ceremony: Franz Nissl Award to Ivan Martinez-Valbuena Monika Hofer (Oxford/UK), Seth Love (Bristol/UK)
11:05 S19-ND-T2	Franz Nissl Award lecture – towards the molecular classification of movement disorders Ivan Martinez-Valbuena (Toronto, ON/CA)
11:30 S19-ND-A146	Cryo-EM – neuropathology's gateway toward an understanding of the atomic structures of amyloids in neurodegenerative diseases Bernardino Ghetti (Indianapolis, IN/US)
11:40 S19-ND-A147	Neurodegenerative proteinopathy – specific dysregulation of iron homeostasis in the human brain Seojin Lee (Toronto, ON/CA)
11:50 S19-ND-A148	Altered cortical expression of long non-coding RNAs associates with specific Alzheimer's disease – related phenotypes in epidemiologic studies Ivana Delalle (Providence, RI/US)
12:00 S19-ND-A149	Blood-brain barrier leakiness is associated with CSF evidence of increased TIE2 cleavage and ANGPT2 release in Alzheimer's Disease Selvi Ince (Bristol/UK)
12:10 S19-ND-A150	Neuropathology based biomarker discovery for vascular pathologies co-existing with Alzheimer's Disease neuropathologic change Margaret Flanagan (San Antonio, TX/US)
12:20 S19-ND-A151	Investigating the effect of mixed pathologies on neuropathological spread in dementia with Lewy bodies Lauren Walker (Newcastle upon Tyne/UK)

Scientific program | Friday, 15th September

12:30–13:45	Lunch break Foyer/ Industrial exhibition
12:45– 13:30	ePoster session II (p. 38)
12:35–13:35	Industrial symposium (p. 64)
13:45–15:15	Session 20 – Cross-field – Scientific Debate – The Rise of the Machines: how AI can enhance or threaten the role of the diagnostic neuropathologist Lecture Hall (2 nd floor) – large auditorium, 500 seats Colin Smith (Edinburgh/UK)
13:45	How AI could support the profession Jing Zhang (Hangzhou/CN)
14:20	How AI could undermine the profession Colin Smith (Edinburgh/UK)
14:40	General discussion
13:45–15:15	Session 21 – Neuroimmunology – SARS-CoV-2 and brain barriers Bernhard von Langenbeck (1 st floor) – small auditorium, 90 seats Markus Glatzel (Hamburg/DE), Ellen Gelpi (Vienna/AT)
13:45 S21-NI-T1	Current concepts of brain barriers Steven Proulx (Bern/CH)
14:15 S21-NI-A234	Detection of SARS-CoV-2 viral proteins and genomic sequences in the human brainstem Aron Emmi (Padova/IT)
14:25 S21-NI-A235	Persistence of SARS-CoV-2 in the brain – Truth or myth? Josefine Radke (Greifswald/DE)
14:35 S21-NI-A236	Multifactorial white matter damage in the acute phase and pre-existing conditions may drive cognitive dysfunction after SARS-CoV-2 infection – neuropathology-based evidence Ellen Gelpi (Vienna/AT)
14:45 S21-NI-A237	Cerebral intussusceptive angiogenesis – distinct small vessel pathology associated with COVID-19 Vincent Umathum (Giessen/DE)
14:55 S21-NI-A238	Post-COVID syndrome is associated with capillary alterations, macrophage infiltration and distinct transcriptomic signatures in skeletal muscles Tom Aschman (Berlin/DE)
15:05 S21-NI-A239	Berlin autopsy study on cause of death upon vaccinations against SARS-CoV-2 Timo Kock (Berlin/DE)

15:15–15:45 PM break

Foyer/ Industrial exhibition

15:45–17:15 Session 22 – Neurodegeneration – Emerging interventions and diagnostics

Room Lecture Hall (2nd floor) – large auditorium, 500 seats
Chairs Ian MacKenzie (Vancouver, BC/CA), Thomas J. Montine (Stanford, CA/US)

15:45 Reasons for optimism in Alzheimer disease therapeutics
S22-ND-T1 Bradley Hyman (Boston, MA/US)

16:15 MEG3 activates necroptosis in human neuron xenografts modelling Alzheimer's
S22-ND-T2 disease
Bart De Strooper (Leuven/BE)

16:45 Extracellular vesicles in blood – potential biomarkers for Alzheimer's Disease and differential
S22-ND-A152 diagnosis based on synaptic function and brain-region related proteins
Chen Tian (Hangzhou/CN)

16:55 Treatment with necroptosis-inhibitors reduces accumulation of necroptosis-related proteins and
S22-ND-A153 neuronal loss in APP23xTAU58 mice
Dietmar R. Thal (Leuven/BE)

17:05 Detection of alpha-synuclein in biopsies and surgical resections of peripheral organs in patients
S22-ND-A154 with isolated REM sleep behavior disorder
Iban Aldecoa (Barcelona/ES)

15:45–17:15 Session 23 – Neurooncology – AOSNP Guidelines for Adapting Diagnostic Approaches for Practical Taxonomy in Resource-Limited Regions (AOSNP-ADAPTR)

Room Bernhard von Langenbeck (1st floor) – small auditorium, 90 seats
Chairs Malak Abedalthagafi (Atlanta, GA/US), Felipe D'Almeida Costa (Sao Paulo/BR)

15:45 Introduction
S23-NO-T1 Chitra Sarkar (New Delhi/IN)

16:00 Adult diffuse gliomas
S23-NO-T2 Vani Santosh (Bengaluru/IN)

16:15 Pediatric diffuse and circumscribed gliomas
S23-NO-T3 Takashi Komori (Tokyo/JP)

16:30 Embryonal tumors
S23-NO-T4 Maysa Al-Hussaini (Amman/JO)

16:45 Ependymomas
S23-NO-T5 Michael Buckland (Sydney/AU)

17:00 General discussion

17:30–19:00 Session 24 – Neurooncology – Glial and glioneuronal tumors

Room Lecture Hall (2nd floor) – large auditorium, 500 seats

Chairs Geeta Chacko (Vellore/IN), Abigail Suwala (Heidelberg/DE)

17:30 Investigating regional heterogeneity and progression-associated markers in oligodendrogliomas
S24-NO-A13 Thomas Millner (London/UK)

17:40 CDKN2A/B deletion in IDH-mutant astrocytomas
S24-NO-A14 Manali Ranade (Mumbai/IN)

17:50 Heterochromatin dysfunction impacting genomic topology and superenhancer landscapes
S24-NO-A15 underlies ATRX-deficient gliomagenesis
Jason Huse (Houston, TX/US)

18:00 Analysis of the implementation of DNA methylation assay for routine CNS tumors
S24-NO-A16 diagnosis
Monica Mezmezian (Buenos Aires/AR)

18:10 A novel type of IDH-wildtype glioma characterized by highly diffuse growth pattern, distinct
S24-NO-A17 epigenetic profile and relatively favorable prognosis
Amos Münch (Frankfurt a. M./DE)

18:20 Epigenetically defined angiocentric gliomas may lack angiocentric growth and instead show a
S24-NO-A20 variety of growth patterns
Annika K. Wefers (Hamburg/DE)

18:30 Molecular profiling of ependymomas in Indian cohort
S24-NO-A18 Mehar Chand Sharma (Delhi/IN)

18:40 Transcriptomic and epigenetic dissection of spinal ependymomas (SP-EPN) identifies clinically
S24-NO-A19 relevant subtypes enriched for tumors with and without NF2 mutation
Karoline Hack (Hamburg/DE)

18:50 High-grade gliomas occurring in teenagers and young adult patients comprise novel molecular
S24-NO-A21 subgroups
Matthew Clarke (London/UK)

17:30–19:00 Session 25 – Muscle and nerve – Myositis

Room Bernhard von Langenbeck (1st floor) – small auditorium, 90 seats
 Chairs Corinna Preuße (Berlin/DE), Katrin Frauenknecht (Dudelange/LU)

17:30 Molecular profiling of iR Myositis
 S25-MN-T1 Yves Allenbach (Paris/FR)

17:55 Overlap and non specific myositis – novel development
 S25-MN-T2 Laure Gallay (Lyon/FR)

18:20 Skeletal muscle expression of immune regulating proteins in myositis subtypes
 S25-MN-A270 Anne Schänzer (Giessen/DE)

18:30 Longitudinal TDP43-associated cryptic exon splicing in early and full-blown inclusion body myositis
 S25-MN-A271 Felix Kleefeld (Berlin/DE)

18:40 Pipestem capillaries in necrotizing myopathy – a pathological and clinical characterization in Chinese patients
 S25-MN-A272 Mingshi Gao (Shanghai/CN)

20:00–01:00 Social evening | Restaurant “HABEL am Reichstag” (p. 63)

09:00–10:15 Session 26 – Neurooncology – Rapid intra- and postoperative diagnostics

Room Lecture Hall (2nd floor) – large auditorium, 500 seats
 Chair Franck Bielle (Paris/FR), Guido Reifenberger (Duesseldorf/DE)

09:00 Opportunities and limitations of Raman spectroscopy in neuropathological
 S26-N0-T2 diagnostics
 Michel Mittelbronn (Dudelange/LU)

09:20 Nanopore sequencing for rapid brain tumor diagnostics
 S26-N0-T1 Philipp Euskirchen (Berlin/DE)

09:40 Ultra-fast deep-learned pediatric CNS tumor classification during surgery
 S26-N0-A29 Bastiaan Tops (Utrecht/NL)

09:50 Classification of brain tumors by Nanopore sequencing of cell-free DNA from cerebrospinal fluid
 S26-N0-A31 Melanie Schoof (Hamburg/DE)

10:00 In vivo confocal laser endomicroscopy of brain tumors – a new era in intraoperative digital diagnostics
 S26-N0-A30 Arthur Wagner (Munich/DE)

09:00–10:15 Session 27 – Developmental – Developmental and childhood disorders in neuropathology

Room Bernhard von Langenbeck (1st floor) – small auditorium, 90 seats
 Chair Christine Haberler (Vienna/AT), Hans-Hilmar Goebel (Berlin/DE)

09:00 Human hippocampal neurogenesis throughout life – controversies
 S27-OT-T1 Homa Adle-Biassette (Paris/FR)

09:20 Neurodegenerative disorders in childhood – What can neuropathology contribute today?
 S27-OT-T2 Glenn Anderson (London/UK)

09:40 Congenital Disorders of Glycosylation – some neuropathologic highlights from a heterogeneous
 S27-OT-T3 group of genetic disorders
 Brian Harding (Philadelphia, PA/US)

10:30–11:45 Session 28 – Neurodegeneration – Neuroimmunology meets neurodegeneration – commonalities and differences

Room Lecture Hall (2nd floor) – large auditorium, 500 seats
 Chairs Bernardino Ghetti (Indianapolis, IN/US), Kevin F. Bieniek (San Antonio, TX/US)

10:30 Progress understanding MS progression
 S28-ND-T1 Richard M. Ransohoff (Boston, MA/US)

11:00 Oligodendrocyte Pathology and Neurodegeneration – Where is the link?
 S28-ND-T2 Sarah Jäkel (Munich/DE)

- 11:25
S28-ND-A155 Treatment with the autophagy activator spermidine reduced amyloid beta pathology and neuroinflammation in an Alzheimer's Disease mouse model
Marina Jendrach (Berlin/DE)
- 11:35
S28-ND-A156 Amyloid- β deposits distinctively correlate with tangles and glial activation in Alzheimer's Disease subtypes
Baayla D. C. Boon (Jacksonville, FL/US)
- 10:30–11:45 **Session 29 – Developmental and other – Developmental disorders abstracts and other abstract highlights**
- Room Bernhard von Langenbeck (1st floor) – small auditorium, 90 seats
Chairs Ivana Delalle (Boston, MA/US), Esther Quick (Evandale/AU)
- 10:30
S29-OT-A311 Novel zebrafish model for studying neurodevelopment in Timothy Syndrome
Nancy Saana Banono (Oslo/NO)
- 10:40
S29-OT-A312 Normal development of cerebellar vermis in midgestation – a roadmap for pathological diagnosis
Jaime Ferrer-Lozano (València/ES)
- 10:50
S29-OT-A313 Somatic mosaicism of the PI3K-AKT-MTOR pathway causes hemimegalencephaly – analyses of human fetal cases and animal models
Kyoko Itoh (Kyoto/JP)
- 11:00
S29-OT-A314 Congenital stenosis of aqueduct of Sylvius secondary to mesencephalic vascular malformation: autopsy case report in a fetus
Mario Tonatiuth Espinosa Romero (Mexico City/MX)
- 11:10
S29-OT-A315 High-dimensional characterisation of the cellular and molecular changes in the human brain after radiotherapy
Thomas Millner (London/UK)
- 11:20
S29-OT-A316 Spinal cord pathology is important in investigating abusive head trauma (AbHT) in children: a retrospective assessment of 40 cases
Safa Al-Sarraj (London/UK)
- 11:30
S29-OT-A317 Neuropathological findings in autopsy of a patient with MELAS-like mitochondrial encephalopathy due to a new ATP8 mutation
Justino Jiménez Almonacid (Madrid/ES)

Scientific program | Saturday, 16th September

11:50–12:45	Closing ceremony and awards
Room	Lecture Hall (2 nd floor) – large auditorium, 500 seats
11:50	Werner-Rosenthal-Prize of the DGNN Ingmar Blümcke (Erlangen/DE)
11:55	Theodor-Schwann-Prize of the DGNN Joachim Weis (Aachen/DE)
12:00	Awards for outstanding scientific contributions: Neuroimmunology Werner Stenzel (Berlin/DE) Epilepsy Werner Stenzel (Berlin/DE) Muscle & Nerve Hans-Hilmar Goebel (Berlin/DE) Other fields of neuropathology Hans-Hilmar Goebel (Berlin/DE) Neurodegeneration Frank Heppner (Berlin/DE) Neurooncology David Capper (Berlin/DE)
12:30	Closing remarks David Capper (Berlin/DE)

- 12:45–13:33 **ePoster Session Neurooncology 1 – Glial, glioneuronal and embryonal tumors I**
Room ePoster Station 1 – Expertisium (ground floor)
Chair Annika Wefers (Hamburg/DE)
- 12:45 The correlation between pleomorphic xanthoastrocytoma methylation class and the integrated
PS1-N0-A49 pathological diagnosis
Murad Alturkustani (Jeddah/SA)
- 12:51 Insights into molecular biology of Pleomorphic Xanthoastrocytoma
PS1-N0-A50 Vaishali Suri (New Delhi/IN)
- 12:57 Molecular characterization of precursor lesions of High Grade Astrocytoma with Piloïd
eP-N0-A83 Features (HGAP)
Eilís Pérez (Berlin/DE)
- 13:03 Diffuse gliomas with low-grade histopathological features and FGFR3-TACC3 fusion – a
PS1-N0-A52 diagnostic dilemma
Valeria Barresi (Verona/IT)
- 13:09 VGLL-altered CNS schwannoma is a new tumor entity with distinct DNA-methylation profile and
PS1-N0-A53 recurrent gene fusions of either VGLL3 or VGLL1
Simone Schmid (Berlin/DE)
- 13:15 Chordoid glioma – a case report of an intracranial mass in a forty-four year old female
PS1-N0-A54 Seth Andrew Salih (Manila/PH)
- 13:21 Characterisation of gene fusions in MYB(L1)-altered gliomas
PS1-N0-A55 Jenny Luca Rohwer (Hamburg/DE)
- 13:27 Molecular characteristics and prognostic biomarkers of central neurocytoma
PS1-N0-A56 Maja Krech (Berlin/DE)
- 12:45–13:33 **ePoster Session Neurooncology 2 – Meningioma and other non-glial tumors**
Room ePoster Station 2 – Foyer (2nd floor)
Chair Bjarne W. Kristensen (Copenhagen/DK)
- 12:45 Utility of DNA-methylation profiling and Integrated Molecular-Morphologic Meningioma
PS2-N0-A41 classification as a prognostic biomarker in CNS WHO grade 2 meningiomas – a retrospective
feasibility study in a patient cohort with resected meningiomas in New Zealand
Fouzia Ziad (Hamilton/NZ)
- 12:51 Clinical implications of DNA methylation-based integrated classification of histologically
PS2-N0-A42 defined grade 2 meningiomas
Felix Ehret (Berlin/DE)

- 12:57 Using molecular and immunohistochemical features to predict outcomes in grade 3 meningiomas
PS2-NO-A43 Karina Chornenka Martin (Vancouver, BC/CA)
- 13:03 Transcription factor expression profile in immunonegative pituitary adenomas
PS2-NO-A45 Geeta Chacko (Vellore/IN)
- 13:09 Lineage-dependent expression of Islet-1 in pituitary neuroendocrine tumors
PS2-NO-A46 Ekkehard Hewer (Lausanne/CH)
- 13:15 Expression of transcription factors is associated with higher recurrence in craniopharyngiomas
PS2-NO-A47 Jesús Cienfuegos Meza (Mexico City/MX)
- 13:21 Expression of apolipoproteins in adamantinomatous craniopharyngiomas correlates with tumor recurrence and survival
PS2-NO-A48 Jesús Cienfuegos Meza (Mexico City/MX)
- 12:45–13:33 ePoster Session Neurodegeneration 1 – The neuropathology of AD**
Room ePoster Station 3 – Rudolf Virchow (2nd floor)
Chair Dietmar Thal (Leuven/BE)
- 12:45 N- and O-linked sialylation in Alzheimer's Disease postmortem brain tissue
eP-ND-A192 Kevin Bieniek (San Antonio, TX/US)
- 12:51 Pathologic subtyping of Alzheimer's Disease brain tissue reveals disease heterogeneity
PS3-ND-A165 Andrew Teich (New York, NY/US)
- 12:57 Understanding the role of extracellular vesicles in the pathophysiology of Alzheimer's Disease
PS3-ND-A166 Mohsin Shafiq (Hamburg/DE)
- 13:03 The role of CD22 in Alzheimer's Disease pathology in APPPS1 mice
PS3-ND-A167 Véronique Tschui (Berlin/DE)
- 13:09 Interleukin-12-driven crosstalk in Alzheimer's Disease affecting oligodendrocyte survival and myelination
PS3-ND-A168 Maria Geesdorf (Berlin/DE)
- 13:15 Extra densities in cryo-EM maps of fibrils from Alzheimer's Disease and other neurodegenerations
PS3-ND-A169 Leslie Bridges (London/UK)
- 13:21 The neuropathological landscape of Hispanic and Non-Hispanic White Decedents with Alzheimer's Disease
PS3-ND-A170 Rebeca Scalco (Sacramento, CA/US)
- 13:27 The interaction between Kallikrein-8 and its inhibitory network affects Alzheimer's disease
PS3-ND-A171 Paula Pereira de Almeida (Essen/DE)

12:45–13:33 ePoster Session Epilepsy – Epilepsy

Room ePoster Station 4 – Foyer (2nd floor)

Chair Ingmar Blümcke (Erlangen/DE)

12:45 Mild malformations of cortical development with oligodendroglial hyperplasia in epilepsy (MOGHE)
PS4-EP-A292 and with pathogenic SLC35A2 mutations reveal aberrant protein distribution and myelin loss
Erica Cecchini (Erlangen/DE)

12:51 Patterns of pTau in focal cortical dysplasia type III and acquired lesions in an epilepsy surgical series
PS4-EP-A293 Alicja Mrzygłód (London/UK)

12:57 IGF-1R expression is associated with memory performance in patient with temporal lobe
PS4-EP-A294 epilepsy and type 2 hippocampal sclerosis
Jose Eduardo Peixoto-Santos (Sao Paulo/BR)

13:03 White matter microvasculature in temporal lobe epilepsy and neurite orientation dispersion and
PS4-EP-A295 density imaging (NODDI) correlations
Maria Thom (London/UK)

13:09 Epileptogenic lesions with predilection for white matter involvement
PS4-EP-A296 Dimitar Metodiev (Sofia/BG)

13:15 Synapse-specific changes in Arc and BDNF in rat hippocampus following chronic temporal lobe
PS4-EP-A297 epilepsy
Daniel Lawer Egbenya (Cape Coast/GH)

13:21 Mild malformation of cortical development with oligodendroglial hyperplasia in epilepsy (MOGHE)
PS4-EP-A298 and a brain lesion histologically identical to MOGHE in a clinically non-epilepsy patient
Hajime Miyata (Akita City/JP)

13:27 Epileptic seizures revealing Sturge Weber's disease in a tropical environment – study of eight cases
PS4-EP-A299 Souleymane Mbara Diallo (Conakry/GN)

12:45–13:33 ePoster Session Neuroimmunology – Neuroinflammation NOS

Room ePoster Station 5 – Foyer (4th floor)

Chair Dennis Tappe (Hamburg/DE)

12:45 Biopsy proven cerebral sparganosis – a case report

eP-NI-A262 Chenhui Mao (Beijing/CN)

12:51 CD8 T cell-mediated enteric ganglionitis may induce severe gastrointestinal dysmotility

PS5-NI-A241 Anna Brunn (Duesseldorf/DE)

12:57 Actinomycotic abscess in cerebellum – a case report and literature review

eP-NI-A260 Perla Franco del Toro (Guadalajara/MX)

13:03 Rasmussen encephalitis in a case with mild malformation of cortical development with

PS5-NI-A243 oligodendroglial hyperplasia and epilepsy (MOGHE) with SLC35A2 brain mosaicism

Nina Fransen (Utrecht/NL)

13:09 Cerebral actinomycosis as a mimic lymphoma in an HIV-infected patient – diagnosis by
PS5-NI-A244 stereotactic biopsy analysis

Mario Tonatiuth Espinosa Romero (Mexico City/MX)

13:15 Neonatal brain aspergillosis – a case report and literature review

PS5-NI-A245 Perla Franco del Toro (Guadalajara/MX)

13:21 Iron handling in progressive MS

PS5-NI-A246 Christian Johannes Riedl (Vienna/AT)

12:45–13:33	ePoster Session Neurooncology 3 – Glial, glioneuronal and embryonal tumors II
Room	ePoster Station 1 – Expertisium (ground floor)
Chair	Michel Mittelbronn (Dudelange/LU)
12:45	A novel definition of low-grade astrocytoma IDH-mutant to inform observational follow-up and the upcoming era of IDH mutant inhibitors
PS6-NO-A57	Franck Bielle (Paris/FR)
12:51	Beyond IDH1 R132H mutation – clinicopathological characteristics of non-canonical IDH mutant gliomas
PS6-NO-A58	Elena Martinez-Saez (Barcelona/ES)
12:57	Sirtuin 2 inhibition modulates chromatin landscapes genome-wide to induce senescence in ATRX-deficient malignant glioma
PS6-NO-A59	Jason Huse (Houston, TX/US)
13:03	Comprehensive genomic profiling of ATRX-deficient IDH-wildtype adult high-grade gliomas reveals clinically relevant genetic patterns
PS6-NO-A60	Bálint Scheich (Budapest/HU)
13:09	Gliomas with immunohistochemical loss of MMR proteins – clinico-pathological evaluation, a tertiary care cancer institute experience
PS6-NO-A61	Sridhar Epari (Mumbai/IN)
13:15	Proteome signatures are closely associated with histomorphology in Embryonal Tumors with Multilayered Rosettes (ETMR)
PS6-NO-A62	Matthias Dottermusch (Hamburg/DE)
13:21	Adult medulloblastoma – clinico-molecular spectrum, an institutional experience
PS6-NO-A63	Vishesh Adhvaryu (Mumbai/IN)
13:27	DNA methylation profiling of adult spinal glial tumours – results from a large single centre study
PS6-NO-A64	Matthew Clarke (London/UK)

12:45–13:33	ePoster Session Neurooncology 4 – Digital Pathology and neurooncology methods
Room	ePoster Station 2 – Foyer (2 nd floor)
Chair	Daniel Amsel (Giessen/DE)
12:45	Crowd powered neuropathology annotations for machine learning algorithms – a Citizen Science pilot study focused on the Hispanic community
PS7-NO-A69	Brittany Dugger (Sacramento, CA/US)
12:51	Leveraging attention-based convolutional neural networks for meningioma classification in computational histopathology
PS7-NO-A65	Jannik Sehring (Giessen/DE)
12:57	Morphology-based molecular classification of spinal cord ependymomas using deep neural networks
PS7-NO-A66	Yannis Schumann (Hamburg/DE)
13:03	A deep learning-approach to infer somatic alterations in glioma using digital tissue slides
PS7-NO-A67	Birgit Kriener (Oslo/NO)
13:09	brAln App – a versatile smartphone app to annotate histopathological images for enhanced AI training and medical education
PS7-NO-A68	Daniel Amsel (Giessen/DE)
13:15	Rapid DNA methylation-based classification of pediatric brain tumours from ultrasonic aspirate specimens
PS7-NO-A70	Michèle Simon (Berlin/DE)
13:21	Outsourcing of molecular testing for CNS tumors in the era of integrated molecular diagnosis – an experience from King Hussein Cancer Center
PS7-NO-A71	Maysa Al-Hussaini (Amman/JO)
13:27	Comparing p16 and MTAP loss of expression in detecting CDKN2A homozygous deletion in pleomorphic xanthoastrocytoma
PS7-NO-A72	M. Adelita Vizcaino (Rochester, MN/US)

12:45–13:33 ePoster Session Neurodegeneration 2 – Tauopathies & TDP-43

Room ePoster Station 3 – Rudolf Virchow (2nd floor)

Chair Steve M. Gentleman (London/UK)

12:45 Progressive supranuclear palsy subtypes in a neuropathology cohort

eP-ND-A193 Anne Sieben (Antwerp/BE)

12:51 MAPT mutation Δ K281 causes genetically determined pick disease

PS8-ND-A173 Kathy Newell (Indianapolis, IN/US)

12:57 Inconsistent cytopathological distinction between astrocytic plaques and tuft-shaped astrocytes along their morphological spectrum – a neuropathology based inter-rater study

PS8-ND-A175 Toshiaki Uchiyama (Tokyo/JP)

13:03 Autopsy case of corticobasal degeneration with 3-repeat tau accumulation in the precentral gyrus, basal ganglia, substantia nigra and locus coeruleus

PS8-ND-A176 Hiroshi Shintaku (Bunkyo-ku, Tokyo/JP)

13:09 Tau pathology in limbic predominant neuronal inclusion body disease – a new 4R Tauopathy

PS8-ND-A177 Bernardino Ghetti (Indianapolis, IN/US)

13:15 Cell-specific MAPT gene expression is preserved in neuronal and glial tau cytopathologies in Progressive Supranuclear Palsy

PS8-ND-A178 Shelley Forrest (Toronto, ON/CA)

13:21 TDP-43 forms amyloid filaments with a distinct fold in the brains of GRN mutation carriers

PS8-ND-A179 Bernardino Ghetti (Indianapolis, IN/US)

13:27 The LifeAfter90 Study – 2023 report on the neuropathology of an ethnically diverse cohort study of oldest-old in the United States

PS8-ND-A174 Brittany Dugger (Sacramento, CA/US)

ePoster Session II | Friday, 15th September

12:45–13:33 ePoster Session Neurodegeneration 3 – Synucleinopathies, prions & others

Room ePoster Station 4 – Foyer (2nd floor)

Chair Markus Glatzel (Hamburg/DE)

12:45 Qualitative and quantitative alterations of synaptotagmin 13 in synucleinopathies

PS9-ND-A187 Yasuo Miki (Hirosaki/JP)

12:51 NOTCH2NLC GGC repeat expansion causes retinal pathology of NIID patients

PS9-ND-A180 Jun Sone (Nagakute/JP)

12:57 Alpha-Synuclein pathology in the enteric nervous system is a potential biomarker for

PS9-ND-A181 Parkinson's Disease

Aron Emmi (Padova/IT)

13:03 Relation between clinical findings and progression of cerebral cortical pathology in sporadic

PS9-ND-A182 Creutzfeldt-Jakob disease

Yasushi Iwasaki (Nagakute/JP)

13:09 Regional variability of α -synuclein inclusion size in multiple system atrophy

PS9-ND-A183 Ain Kim (Toronto, ON/CA)

13:15 Impaired synaptic gene expression networks in patients with alpha-Synuclein and tau co-pathology

PS9-ND-A184 Felix L. Struening (Munich/DE)

13:21 Original histological phenotype after the experimental transmission to primate of an unusual
PS9-ND-A185 human prionopathy (VPSPr)

Jacqueline Mikol (Fontenay-aux-Roses/FR)

13:27 Dynamic change of synuclein transcription during Lewy body formation

PS9-ND-A186 Tomoya Kon (Toronto, ON/CA)

12:45–13:33 ePoster Session Cross-field – Highlights from “mixed topics”

Room ePoster Station 5 – Foyer (4th floor)

Chair Wilfried den Dunnen (Groningen/NL)

12:45 Bornavirus encephalitis serves as model disease for neurotropic virus infections

PS5-NI-A242 Friederike Liesche-Starnecker (Augsburg/DE)

12:51 Dual correlative light and electron microscopy (CLEM) of human autopsy specimens by gold

PS10-OT-A320 enhancement of quantum dots

Toshiki Uchihara (Tokyo/JP)

- 12:57
PS10-OT-A321 On the structure and microenvironment of cortical microvascular “raspberries” and their association with major neurocognitive disorders – a histopathological and immunohistochemical study
Henric Ek Olofsson (Lund/SE)
- 13:03
PS10-OT-A322 A case of AL amyloidosis died from intracranial hemorrhage
Yasuhiro Ito (Toyota/JP)
- 13:09
PS10-OT-A323 Chiari anomalies – What are they?
Akira Hori (Hannover/DE)
- 13:15
PS10-OT-A324 Tumefactive centrum semiovale and splenium demyelination in a case of suspected Perrault syndrome type 3
Josh Klonoski (Spokane Valley, WA/US)
- 13:21
eP-OT-A329 Migration disorder of the cerebral cortex caused by coactivation of LIN28A and CTNNB1 in neural precursor cells
Jelena Navolic (Hamburg/DE)
- 13:27
PS10-OT-A326 A quality improvement project on the collection and process of cerebrospinal fluid (CSF) for cytology
Alan King Lun Liu (Oxford/UK)

Neurooncology

- S14-N0-A36 Mean global DNA methylation serves as independent prognostic marker in glioblastoma, IDH wildtype
Alicia Eckhardt (Hamburg/DE)
- S14-N0-A37 Exploring Myeloid-Lymphoid interactions in Glioblastomas – NK cells as rheostats in the immune microenvironment
Roman Sankowski (Freiburg i. B./DE)
- S14-N0-A38 Newly designed fish MYCN/ID2 is useful to identify paediatric-type diffuse high-grade glioma, IDH- and H3-wildtype, MYCN-subtype
Arnault Tauziède-Espariat (Paris/FR)
- S14-N0-A39 Fatal outcome of a case of central neurocytoma – a rare and challenging diagnosis
Anna Clarysse Medina (Angono/PH)
- S14-N0-A40 DICER-1 mutant primary intracranial sarcoma – a call for extensive molecular profiling in CNS tumours with spindle morphology
Lao I Weng (Shanghai/CN)
- PS2-N0-A41 Utility of DNA-methylation profiling and Integrated Molecular-Morphologic Meningioma classification as a prognostic biomarker in CNS WHO grade 2 meningiomas – a retrospective feasibility study in a patient cohort with resected meningiomas in New Zealand
Fouzia Ziad (Hamilton/NZ)
- PS2-N0-A42 Clinical implications of DNA methylation-based integrated classification of histologically defined grade 2 meningiomas
Felix Ehret (Berlin/DE)
- PS2-N0-A43 Using molecular and immunohistochemical features to predict outcomes in grade 3 meningiomas
Karina Chornenka Martin (Vancouver, BC/CA)
- PS2-N0-A44 Intracranial myxoid mesenchymal tumor with EWSR1-CREM gene fusion – 2 cases report and literature review
Xiaoqun Ba (Hang Zhou/CN)
- PS2-N0-A45 Transcription factor expression profile in immunonegative pituitary adenomas
Geeta Chacko (Vellore/IN)
- PS2-N0-A46 Lineage-dependent expression of Islet-1 in pituitary neuroendocrine tumors
Ekkehard Hewer (Lausanne/CH)
- PS2-N0-A47 Expression of transcription factors is associated with higher recurrence in craniopharyngiomas
Jesús Cienfuegos Meza (Mexico City/MX)

- PS2-N0-A48 Expression of apolipoproteins in adamantinomatous craniopharyngiomas correlates with tumor recurrence and survival
Jesús Cienfuegos Meza (Mexico City/MX)
- PS1-N0-A49 The correlation between pleomorphic xanthoastrocytoma methylation class and the integrated pathological diagnosis
Murad Alturkustani (Jeddah/SA)
- PS1-N0-A50 Insights into molecular biology of Pleomorphic Xanthoastrocytoma
Vaishali Suri (New Delhi/IN)
- PS1-N0-A51 Polymorphous low-grade neuroepithelial tumor of the young – a short series from a tertiary care centre in South India
Deepti Narasimhaiah (Thiruvananthapuram/IN)
- PS1-N0-A52 Diffuse gliomas with low-grade histopathological features and FGFR3-TACC3 fusion – a diagnostic dilemma
Valeria Barresi (Verona/IT)
- PS1-N0-A53 VGLL-altered CNS schwannoma is a new tumor entity with distinct DNA-methylation profile and recurrent gene fusions of either VGLL3 or VGLL1
Simone Schmid (Berlin/DE)
- PS1-N0-A54 Chordoid glioma – a case report of an intracranial mass in a forty-four year old female
Seth Andrew Salih (Manila/PH)
- PS1-N0-A55 Characterisation of gene fusions in MYB(L1)-altered gliomas
Jenny Luca Rohwer (Hamburg/DE)
- PS1-N0-A56 Molecular characteristics and prognostic biomarkers of central neurocytoma
Maja Krech (Berlin/DE)
- PS6-N0-A57 A novel definition of low-grade astrocytoma IDH-mutant to inform observational follow-up and the upcoming era of IDH mutant inhibitors
Franck Bielle (Paris/FR)
- PS6-N0-A58 Beyond IDH1 R132H mutation – clinicopathological characteristics of non-canonical IDH mutant gliomas
Elena Martínez-Saez (Barcelona/ES)
- PS6-N0-A59 Sirtuin 2 inhibition modulates chromatin landscapes genome-wide to induce senescence in ATRX-deficient malignant glioma
Jason Huse (Houston, TX/US)
- PS6-N0-A60 Comprehensive genomic profiling of ATRX-deficient IDH-wildtype adult high-grade gliomas reveals clinically relevant genetic patterns
Bálint Scheich (Budapest/HU)

- PS6-NO-A61 Gliomas with immunohistochemical loss of MMR proteins – clinico-pathological evaluation, a tertiary care cancer institute experience
Sridhar Epari (Mumbai/IN)
- PS6-NO-A62 Proteome signatures are closely associated with histomorphology in Embryonal Tumors with Multilayered Rosettes (ETMR)
Matthias Dottermusch (Hamburg/DE)
- PS6-NO-A63 Adult medulloblastoma – clinico-molecular spectrum, an institutional experience
Vishesha Adhvaryu (Mumbai/IN)
- PS6-NO-A64 DNA methylation profiling of adult spinal glial tumours – results from a large single centre study
Matthew Clarke (London/UK)
- PS7-NO-A65 Leveraging attention-based convolutional neural networks for meningioma classification in computational histopathology
Jannik Sehring (Giessen/DE)
- PS7-NO-A66 Morphology-based molecular classification of spinal cord ependymomas using deep neural networks
Yannis Schumann (Hamburg/DE)
- PS7-NO-A67 A deep learning-approach to infer somatic alterations in glioma using digital tissue slides
Birgit Kriener (Oslo/NO)
- PS7-NO-A68 brAI n App – a versatile smartphone app to annotate histopathological images for enhanced AI training and medical education
Daniel Amsel (Giessen/DE)
- PS7-NO-A69 Crowd powered neuropathology annotations for machine learning algorithms – a Citizen Science pilot study focused on the Hispanic community
Brittany Dugger (Sacramento, CA/US)
- PS7-NO-A70 Rapid DNA methylation-based classification of pediatric brain tumours from ultrasonic aspirate specimens
Michèle Simon (Berlin/DE)
- PS7-NO-A71 Outsourcing of molecular testing for CNS tumors in the era of integrated molecular diagnosis – an experience from King Hussein Cancer Center
Maysa Al-Hussaini (Amman/JO)
- PS7-NO-A72 Comparing p16 and MTAP loss of expression in detecting CDKN2A homozygous deletion in pleomorphic xanthoastrocytoma
M. Adelita Vizcaino (Rochester, MN/US)
- eP-NO-A73 Glioma diagnosis in the genomic era – gene panel NGS as a key tool
Larry Ruey Si Lam (Hong Kong/HK)

- eP-NO-A74 Clinical, pathological and genomic features of infratentorial IDH-mutant gliomas
Leiming Wang (Beijing/CN)
- eP-NO-A75 Clinicopathological characters of lymphomatosis cerebri
Yong-Juan Fu (Beijing/CN)
- eP-NO-A76 Uncovering a novel population of proliferative cells defined by the expression of BCAS1 in glioblastoma
Raquel Morales-Gallel (Paterna (Valencia/ES)
- eP-NO-A77 Eight cases of Lynch syndrome-associated glioblastomas
Zhigang Yao (Jinan/CN)
- eP-NO-A78 Machine learning-based assessment of intratumor heterogeneity in glioblastoma
Daniel Hieber (Augsburg/DE)
- eP-NO-A79 A rare case of a primary intracranial sarcoma associated with a DICER1 mutation with focal cartilaginous differentiation
Lorraine Robinson (Salt Lake City, UT/US)
- eP-NO-A80 Study of inherited mismatch repair deficiency in pediatric and adult gliomas
Kavneet Kaur (New Delhi/IN)
- eP-NO-A81 High-grade neuroepithelial tumor;EWSR1-PATZ1 fusion – a case report
Leiming Wang (Beijing/CN)
- eP-NO-A82 Implementation of the fifth edition of the WHO classification of tumors of the central nervous system and its implications in a Belgian cohort
Melek Ahmed (Antwerp/BE)
- eP-NO-A83 Molecular characterization of precursor lesions of High Grade Astrocytoma with Piloid Features (HGAP)
Eilís Pérez (Berlin/DE)
- eP-NO-A84 Quantitative characterization of the cell composition in recurrent glioblastoma and its impact on survival
Marten Rinke (Berlin/DE)
- eP-NO-A85 Distribution and tumor cell proximity of immune cells in the tumor core, transition zone and periphery of glioblastomas
Bjarne Winther Kristensen (Copenhagen/DK)
- eP-NO-A86 Nucleation of LDHA promotes the catabolism of BCAAs to sustain UKM cell proliferation through the TxN antioxidant pathway
Ying Liu (Shanghai/CN)

- eP-NO-A87 Rosette-forming glioneuronal tumors may exhibit H3 K28me3 loss along with H3 K27M mutation
Elena Marastoni (Verona/IT)
- eP-NO-A88 Epigenetic and genetic characterization of T-cell lymphomas
Christin Siewert (Berlin/DE)
- eP-NO-A89 Atypical teratoid/rhabdoid tumour (AT/RT) in an adolescent
Theresa Bierling (Munich/DE), Olar Adeyi (Exeter/UK)
- eP-NO-A90 The epigenetic effect of Dexamethasone on glioblastoma cell line
Anna-Maria Barciszewska (Poznań/PL)
- eP-NO-A91 Sarcoidosis lymphoma syndrome presenting as primary central nervous system lymphoma developed during long-term immunosuppressive treatment – a case report
Masashi Watanabe (Ehime/JP)
- eP-NO-A92 DNA methylation-based classification of pituitary carcinomas
Simone Schmid (Berlin/DE)
- eP-NO-A93 The epigenetic therapeutic effect of Juglone on glioblastoma
Anna-Maria Barciszewska (Poznań/PL)
- eP-NO-A94 Clinicopathological features of rosette-forming glioneuronal tumour – single centre experience
Istvan Bodi (London/UK)
- eP-NO-A96 POST (Preview Of Spinal Tumours) study
Archita Juneja (Mumbai/IN)
- eP-NO-A97 Can we predict glioblastoma, IDH wild type with FGFR3::TACC3 fusion morphologically?
Tuce Soylemez-Akkurt (Istanbul/TR)
- eP-NO-A98 Cribriform neuroepithelial tumor with intracytoplasmic eosinophilic hyaline droplets in an infant
Sadeq Al-Dandan (Riyadh/SA)
- eP-NO-A99 Papillary tumors of the skull base – are they all corticotroph adenomas?
Nelli Lakis (Kansas City, MO/US)
- eP-NO-A100 A rare case of light chain deposition disease in brain – diagnosis and management in a 34-year-old female
Fahd Al Sufiani (Riyadh/SA)
- eP-NO-A101 Brain metastasis from scalp pleomorphic dermal sarcoma – a rare case report
Aditya G. Shivane (Plymouth/UK)

- eP-NO-A102 A rare case of a metastatic hepatocellular carcinoma to the pituitary gland
Lorraina Robinson (Salt Lake City, UT/US)
- eP-NO-A103 Imaging-pathological findings of lesions in the silar region in a tertiary care center in Mexico
Mario Tonatiuth Espinosa Romero (Mexico City/MX)
- eP-NO-A104 Transcriptomic analysis of ZFTA-fusion positive and negative ependymoma reveals significant differential dysregulation of genes related to important signalling pathways – report from a tertiary care centre in North India
Kirti Gupta (Chandigarh/IN)
- eP-NO-A105 Anaplastic evolution of pilocytic astrocytomas – a case report and review of the literature
Laetitia Lebrun (Brussels/BE)
- eP-NO-A106 High-risk neuroblastoma with recurrence 28 years after initial diagnosis – a case report
Michael Kritselis (Providence, RI/US)
- eP-NO-A107 An unusual spinal tumour with meningeal and histiocytic features – a case report
Aditya G. Shivane (Plymouth/UK)
- eP-NO-A108 Comparison of clinicopathological differences between the RICH lesions of the brain according to the type of radiation treatment and preceding lesions
Se Hoon Kim (Seoul/KR)
- eP-NO-A109 Application of CXorf67 and H3K27me3 protein in pathological diagnosis of germinoma of central nervous system
Ji Xiong (Shanghai/CN)
- eP-NO-A110 MGMT gene promoter methylation in diffuse midline glioma, H3K27-mutant
Prarthna Shah (Mumbai/IN)
- eP-NO-A111 Cervical extramedullar intradural intermediate grade melanocytic neoplasm – an aggressive evolution
Laura Graciela Chávez Macías (Mexico City/MX)
- eP-NO-A112 Primary CNS lymphoma presenting as hemichorea hemiballismus
Neetika Sharma (Chandigarh/IN)
- eP-NO-A113 Multiple abnormalities of neurofibromatosis type 2 (meningiomatosis, vestibular schwannomas, at the cervicomedullary junction with syringomyelia-syringobulbia and cortical hamartia) in a previously undiagnosed man – autopsy case report
Diana Villa Sepúlveda (Mexico city/MX)
- eP-NO-A114 Ganglioneurocytoma of septum pellucidum with prominent dystrophic axonal spheroids
Sadeq Al-Dandan (Riyadh/SA)

- eP-NO-A115 Primary central nervous system lymphoma accompanied with amyloid angiopathy – an autopsy case report
Chenhui Mao (Beijing/CN)
- eP-NO-A116 A unique case report of adult sellar diffuse paediatric-type high-grade glioma, H3-wildtype and IDH-wildtype RTK1 molecular subtype
Yamina Yousfi (Blida/DZ)
- eP-NO-A117 Immunohistochemical expression of H3K27me3 protein in IDH-mutant gliomas
Vividh Raje (Mumbai/IN)
- eP-NO-A118 Clinicopathological and molecular study of Embryonal tumour with multilayered rosettes
Leiming Wang (Beijing/CN)
- eP-NO-A119 Central nervous tissue in ovarian mature teratoma – a histopathological and immunohistochemical study of its neuropathological alterations
Masayuki Shintaku (Hirakata/JP)
- eP-NO-A120 Next Generation Sequencing (NGS) in glial tumor diagnosis – single center experience
Kadriye Ebru Akar (Istanbul/TR)
- eP-NO-A121 Unusual case of Ganglioglioma grade 1 transforming into a IDH mutant high grade astrocytoma to Glioblastoma (IDH wild type) over 10 years
Sunita Ahlawat (Noida/IN)
- eP-NO-A122 Wunderlich syndrome in a woman with Tuberous Sclerosis Complex – autopsy case report
Diana Villa Sepúlveda (Mexico city/MX)
- eP-NO-A123 Frequent co-occurrence of Alzheimer-type neurodegeneration in glioblastoma-adjacent cortex
Lisa Greutter (Vienna/AT)
- eP-NO-A124 Different expression and clinical implications of Cancer-Associated Fibroblast (CAF) markers in brain metastases
Kyung-Hwa Lee (Hwasun-gun/KR)
- eP-NO-A125 p16 immunohistochemistry as a screening tool for the detection of homozygous CDKN2A deletions in glial tumors and meningiomas
Valentina Zschernack (Bonn/DE)
- eP-NO-A126 Evaluation of 1p deletion by Fluorescence in situ Hybridization in meningiomas – a simple easy to implement prognostic stratifier
Aekta Shah (Mumbai/IN)
- eP-NO-A127 Chordoid Glioma – a rare tumor of diagnostic dilemma
Ashish Wadekar (New Delhi/IN)

- eP-NO-A128 The role of Neutrophil to lymphocyte ratio (NLR) in predicting survival outcome in glioblastoma
Maysa Al-Hussaini (Amman/JO)
- eP-NO-A129 Meningioma-to-malignant peripheral nerve sheath tumor transdifferentiation by a single genetic event
Kristof Egervari (Geneva/CH)
- eP-NO-A130 Giant cell enriched IDH wildtype glioblastoma differs in metabolic phenotype, tumor microenvironment composition and DNA methylation age acceleration
Katharina J. Weber (Frankfurt a. M./DE)
- eP-NO-A131 Application of Spatial Biology to assess prognostic and predictive biomarkers in the tumor microenvironment
Karl H. Plate (Frankfurt a. M./DE)
- eP-NO-A132 Molecular and clinical characterization of atypical neurofibromas
Catena Kresbach (Hamburg/DE)
- eP-NO-A133 Rhythmic expression of BMAL in normal human Schwann cells and disturbance of clock gene expression in malignant NF1 associated tumor cells
Anja Harder (Mainz/DE)
- eP-NO-A134 Quantifying heterogeneity in WSI using ecological diversity indices is a prognostic marker in Glioblastoma
Georg Prokop (Munich/DE)
- eP-NO-A135 Comprehensive molecular and clinical characterization of glioblastomas with long-term survival
Anna-Maria Wurzer (Munich/DE)
- eP-NO-A137 Scaffold-based (Matrigel TM) 3D culture technique of glioblastoma recovers a patient-like immunosuppressive phenotype
Markus J. Riemenschneider (Regensburg/DE)
- eP-NO-A138 The role of p16 immunohistochemistry as a prognostic biomarker in meningiomas
Jens Schittenhelm (Tuebingen/DE)
- eP-NO-A139 Mapping the tumor microenvironment in primary and recurrent glioblastoma by multiplex immunofluorescence, methylation and AI-based approaches
Pinar Cakmak (Frankfurt a. M./DE)

Neurodegeneration

- S14-ND-A159 Consistent and distinct involvement of the cranial and spinal nerves in PSP and other tauopathies
Hidetomo Tanaka (Toronto, ON/CA)
- S14-ND-A160 DNA methylation differences in Alzheimer's Disease neuropathology in old age – a comprehensive brain region survey
Anna-Lena Lang (Berlin/DE)

- S14-ND-A161 Blood CNS regionally enriched extracellular vesicles carrying pTau217 for Alzheimer's Disease diagnosis and differential diagnosis
Zhen Guo (Hangzhou/CN)
- S14-ND-A162 Investigating ALS pathogenesis caused by distinct SOD1 strains in transgenic mouse models
Thomas Brännström (Umeå/SE)
- S14-ND-A163 Alterations of neuroprotective ER- co-chaperone SIL1 – disruption of autophagy and RNA binding protein homeostasis and selective neuronal vulnerability in Amyotrophic lateral sclerosis (ALS)
Haihong Guo (Aachen/DE)
- PS3-ND-A165 Pathologic subtyping of Alzheimer's Disease brain tissue reveals disease heterogeneity
Andrew Teich (New York, NY/US)
- PS3-ND-A166 Understanding the role of extracellular vesicles in the pathophysiology of Alzheimer's Disease
Mohsin Shafiq (Hamburg/DE)
- PS3-ND-A167 The role of CD22 in Alzheimer's Disease pathology in APPPS1 mice
Véronique Tschui (Berlin/DE)
- PS3-ND-A168 Interleukin-12-driven crosstalk in Alzheimer's Disease affecting oligodendrocyte survival and myelination
Maria Geesdorf (Berlin/DE)
- PS3-ND-A169 Extra densities in cryo-EM maps of fibrils from Alzheimer's Disease and other neurodegenerations
Leslie Bridges (London/UK)
- PS3-ND-A170 The neuropathological landscape of Hispanic and Non-Hispanic White Decedents with Alzheimer's Disease
Rebeca Scalco (Sacramento, CA/US)
- PS3-ND-A171 The interaction between Kallikrein-8 and its inhibitory network affects Alzheimer's Disease
Paula Pereira de Almeida (Essen/DE)
- PS8-ND-A173 MAPT mutation $\Delta K281$ causes genetically determined pick disease
Kathy Newell (Indianapolis, IN/US)
- PS8-ND-A174 The LifeAfter90 Study – 2023 report on the neuropathology of an ethnically diverse cohort study of oldest-old in the United States
Brittany Dugger (Sacramento, CA/US)
- PS8-ND-A175 Inconsistent cytopathological distinction between astrocytic plaques and tuft-shaped astrocytes along their morphological spectrum – a neuropathology based inter-rater study
Toshiki Uchihara (Tokyo/JP)

- PS8-ND-A176 Autopsy case of corticobasal degeneration with 3-repeat tau accumulation in the precentral gyrus, basal ganglia, substantia nigra and locus coeruleus
Hiroshi Shintaku (Bunkyo-ku, Tokyo/JP)
- PS8-ND-A177 Tau pathology in limbic predominant neuronal inclusion body disease – a new 4R Tauopathy
Bernardino Ghetti (Indianapolis, IN/US)
- PS8-ND-A178 Cell-specific MAPT gene expression is preserved in neuronal and glial tau cytopathologies in Progressive Supranuclear Palsy
Shelley Forrest (Toronto, ON/CA)
- PS8-ND-A179 TDP-43 forms amyloid filaments with a distinct fold in the brains of GRN mutation carriers
Bernardino Ghetti (Indianapolis, IN/US)
- PS9-ND-A180 NOTCH2NLC GGC repeat expansion causes retinal pathology of NIID patients
Jun Sone (Nagakute/JP)
- PS9-ND-A181 Alpha-Synuclein pathology in the enteric nervous system is a potential biomarker for Parkinson's Disease
Aron Emmi (Padova/IT)
- PS9-ND-A182 Relation between clinical findings and progression of cerebral cortical pathology in sporadic Creutzfeldt-Jakob disease
Yasushi Iwasaki (Nagakute/JP)
- PS9-ND-A183 Regional variability of α -synuclein inclusion size in multiple system atrophy
Ain Kim (Toronto, ON/CA)
- PS9-ND-A184 Impaired synaptic gene expression networks in patients with alpha-Synuclein and tau co-pathology
Felix L. Struebing (Munich/DE)
- PS9-ND-A185 Original histological phenotype after the experimental transmission to primate of an unusual human prionopathy (VPSPr)
Jacqueline Mikol (Fontenay-aux-Roses/FR)
- PS9-ND-A186 Dynamic change of synuclein transcription during Lewy body formation
Tomoya Kon (Toronto, ON/CA)
- PS9-ND-A187 Qualitative and quantitative alterations of synaptotagmin 13 in synucleinopathies
Yasuo Miki (Hirosaki/JP)
- eP-ND-A188 Kallikrein-8 cleaves APOE4, but not APOE2 and thereby affects Alzheimer's pathology
Katharina Groll (Essen/DE)
- eP-ND-A189 Dysregulation of the Kallikrein-kinin-system in Alzheimer's Disease is mediated by Kallikrein-8
Katharina Groll (Essen/DE)

- eP-ND-A190 Heterogeneity of medullary pathology in Multiple System Atrophy
Clarissa Rowe (London/UK)
- eP-ND-A191 Microglial LRRK2-mediated NFATc1 attenuates α -Synuclein immunotoxicity in association with CX3CR1-induced migration and the lysosome-initiated degradation
Linjuan Feng (Fuzhou/CN)
- eP-ND-A192 N- and O-linked sialylation in Alzheimer's Disease postmortem brain tissue
Kevin Bieniek (San Antonio, TX/US)
- eP-ND-A193 Progressive supranuclear palsy subtypes in a neuropathology cohort
Anne Sieben (Antwerp/BE)
- eP-ND-A194 Clinicopathological features of progressive supranuclear palsy with asymmetrical atrophy of the superior cerebellar peduncle
Ryuichi Koizumi (Nagakute/JP)
- eP-ND-A195 Novel quantitative digital pathology pipeline to map regional misfolded protein pathology in Parkinson's Disease
Hemanth Ramesh Nelvagal (London/UK)
- eP-ND-A196 Intranasal administration of trehalose reduces α -synuclein oligomers by accelerating aggregate formation in a mouse model of multiple system atrophy
Makoto Tanaka (Hirotsuki/JP)
- eP-ND-A197 Clinical and pathologic spectrum of neurodegeneration with TDP-43(+) inclusions – ALS, PLS and semantic variant of primary progressive aphasia
Serguei Bannykh (Los Angeles, CA/US)
- eP-ND-A198 Clinicopathological characterization and concomitant proteinopathies in ALS patients
Erica Stenval (Umeå/SE)
- eP-ND-A199 ROS attenuates TET2-dependent ZO-1 epigenetic expression in cerebral vascular endothelial cells
Ying Liu (Shanghai/CN)
- eP-ND-A200 Validation of spatial transcriptomics approaches on post-mortem brain tissue from patients with Lewy body disorders
Toby Curless (London/UK)
- eP-ND-A201 Salivary alpha-synuclein as a potential diagnostic marker of Parkinson's Disease
Dominik Hrabos (Olomouc/CZ)
- eP-ND-A202 Clinicopathological spectrum of globular glial tauopathies (GGT)
Mari Yoshida (Nagakute/JP)

- eP-ND-A204 A new case of Mitochondrial Membrane Protein Associated Neurodegeneration (MPAN)
Jose Bonnin (Indianapolis, IN/US)
- eP-ND-A205 Mesenchymal stem cells therapy exerts neuroprotection in an animal model of Parkinson's disease
Saeid Bagheri-Mohammadi (Tehran/IR)
- eP-ND-A206 Honey and black seed synergistically promote regeneration of oligodendrocytes in cuprizone intoxicated quail brain
Mouhamed Zakiou Kolawole Raimi (Abomey Calavi/BJ)
- eP-ND-A207 Severe argyrophilic grain disease in a centenarian with severe dementia who did not show the "sloping shoulders sign"
Tamaki lwase (Nagoya, Aichi/JP)
- eP-ND-A208 α -Synuclein in blood CNS-originating extracellular vesicles – an inconclusive diagnostic quest for Parkinsonian disorders
Hash Brown Taha (Los Angeles, CA/US)
- eP-ND-A209 Demyelination triggers divergent neuropathological consequences in APP SWE and APP SWE PSEN1 dE9 transgenic mouse models of Alzheimer's Disease
Kai-Hei Tse (Hung Hom, Kowloon/HK)
- eP-ND-A210 Progressive supranuclear palsy presenting with late onset chorea plus ataxia syndrome – a rare phenotype with severe oligodendrocytic involvement and globular morphologies
Ricardo Taipa (Porto/PT)
- eP-ND-A211 CCP1, a regulator of tubulin post-translational modifications, potentially plays an essential role in cerebellar development
Asuka Araki (Izumo/JP)
- eP-ND-A212 Evaluation of disease-specific α -synuclein seeding in formaldehyde-fixed paraffin-embedded human brain archived long-term
Ain Kim (Toronto, ON/CA)
- eP-ND-A213 Multi-centric plaques in kuru
Beata Sikorska (Lodz/PL)
- eP-ND-A215 Multiple system atrophy with abundant nigral neuronal cytoplasmic inclusions presenting slowly progressive levodopa-responsive Parkinsonism
Toshimasa Ikeda (Nagoya/JP)

ePoster self study

- eP-ND-A216 Significant contralaterality of temporal-predominant neuro-astroglial tau pathologies and FTLTDP type C presenting with the right temporal variant FTD
Hidetomo Tanaka (Toronto, ON/CA)
- eP-ND-A217 A study on the expression profile of genes coding for secretory proteins using in vitro model of Alzheimer's Disease
Ravinder Singh (Amritsar/IN)
- eP-ND-A218 Mixed brain pathology in neurodegenerative parkinsonism and dementia
Katerina Mensikova (Olomouc/CZ)
- eP-ND-A219 Altered iron content in superficial and deep white matter in Alzheimer's Disease
Anna Maria BirkI-Toegelhofer (Innsbruck/AT)
- eP-ND-A220 Astrocytic permeability disorder in spheroid leukoencephalopathy with CSF1R mutation
Teresa Dot Gómara (Pamplona/ES)
- eP-ND-A221 Histological methods to study spinal receptor expression after degeneration of descending tracts
Anika Simonovska Serra (Vienna/AT)
- eP-ND-A223 Molecular subtyping of Progressive Supranuclear Palsy – a proof of concept
Ivan Martinez-Valbuena (Toronto/CA)
- eP-ND-A224 Alpha-synuclein inclusions in the dentate gyrus are associated with cognitive impairment in multiple system atrophy
Marcelina Wojewska (London/UK)
- eP-ND-A225 Beta-amyloid is only seen in the extracellular compartment in diagnostic brain biopsies from idiopathic normal pressure hydrocephalus patients
Sylwia Libard (Uppsala/SE)

Neuroimmunology

- PS5-NI-A241 CD8 T cell-mediated enteric ganglionitis may induce severe gastrointestinal dysmotility
Anna Brunn (Duesseldorf/DE)
- PS5-NI-A242 Bornavirus encephalitis serves as model disease for neurotropic virus infections
Friederike Liesche-Starnecker (Augsburg/DE)
- PS5-NI-A243 Rasmussen encephalitis in a case with mild malformation of cortical development with oligodendroglial hyperplasia and epilepsy (MOGHE) with SLC35A2 brain mosaicism
Nina Fransen (Utrecht/NL)
- PS5-NI-A244 Cerebral actinomycosis as a mimic lymphoma in an HIV-infected patient – diagnosis by stereotactic biopsy analysis
Mario Tonatiuth Espinosa Romero (Mexico City/MX)

- PS5-NI-A245 Neonatal brain aspergillosis – a case report and literature review
Manuel Alejandro Gonzalez Adame (Guadalajara/MX)
- PS5-NI-A246 Iron handling in progressive MS
Christian Johannes Riedl (Vienna/AT)
- eP-NI-A248 Neuroimmunological profile and virus detection in human Borna virus encephalitis
Nicola JunUKäck (Augsburg/DE)
- eP-NI-A249 The challenges of diagnosing chronic inflammatory pathologies in the central nervous system: a case report of Erdheim-Chester disease
Leona Kawelke (Berlin/DE)
- eP-NI-A250 Mouse strain-dependent effects of host microbiota on microglia during homeostasis and disease
Daniel Erny (Freiburg i. B./DE)
- eP-NI-A251 Viral propagation occurs exclusively by oligodendrocyte lineage cells in early progressive multifocal leukoencephalopathy lesions
Adriane Kutllovci (Goettingen/DE)
- eP-NI-A252 Retrospective case finding of human Borna virus encephalitis on fluid- and tissue samples
Julia ten Pas (Munich/DE)
- eP-NI-A253 Early immunosuppressive therapy of human Bornavirus encephalitis shows impact on the immunopathology
Yannik Vollmuth (Munich/DE)
- eP-NI-A254 Mycobacterium tuberculosis cell wall antigens induce the formation of immune complexes and the development of vasculitis in an experimental murine model
Jesús Cienfuegos Meza (Mexico City/MX)
- eP-NI-A255 Concurrent brain toxoplasmosis and nocardiosis – two case reports
Marta Kisiel (Hamilton, ON/CA)
- eP-NI-A256 CMV encephalitis with intracranial hemorrhages in newborn/infant
Neşe Yeldir (Istanbul/TR)

- eP-NI-A257 Clinical and radiological features of antibody positive neuromyelitis optica spectrum disorder (NMOSD) and myelin oligodendrocyte glycoprotein antibody-associated disease (MOGAD)
Rajalakshmi Poyuran (Trivandrum/IN)
- eP-NI-A258 Autoimmune encephalitis manifested as CD8+ T-lymphocyte encephalitis
Seong-IK Kim, Sung-Hye Park (Seoul/KR)
- eP-NI-A259 A viral demyelizing disease diagnosed by vision loss – progressive multifocal leukoencephalopathy
Neşe Yeldir (Istanbul/TR)
- eP-NI-A260 Actinomycotic abscess in cerebellum – a case report and literature review
Perla Franco del Toro (Guadalajara/MX)
- eP-NI-A261 Progressive multifocal leukoencephalopathy is changing – a case series from the eighties to our days
María José López Martínez (Madrid/ES)
- eP-NI-A262 Biopsy proven cerebral sparganosis – a case report
Chenhui Mao (Beijing/CN), Atuganile Malango (Dar Es Salaam/TZ)

Muscle and Nerve

- S14-MN-A274 Megaconial congenital muscular dystrophy associated with ichthyosis due to CHKD mutation
Istvan Bodi (London/UK)
- S14-MN-A275 Application of serial section electron microscopy for 3D visualization of the neuromuscular junction in a patient with seronegative myasthenia gravis
Carsten Dittmayer (Berlin/DE)
- S14-MN-A276 Histopathological features and autophagy aspects of Ku+ myositis
Corinna Preusse (Berlin/DE)
- eP-MN-A277 Morphological study of prepathologic SMA can help identify rare genetic constellations and pave timely therapy
Jenny Meinhardt (Berlin/DE)
- eP-MN-A278 A comparison of neurofilament in peripheral nerve and serum in patients undergoing nerve biopsy
Simon Streit (Berlin/DE)
- eP-MN-A279 Characteristic histopathological findings in congenital MYL-1 myopathy – type II myofibres atrophy with type I myofibres hypertrophy
Cristina Jou (Esplugues de Llobregat/ES)
- eP-MN-A280 A case report of amyloidosis of the brachial plexus nerve and review of the literature
Chong Sun (Shanghai/CN)

- eP-MN-A281 Evaluation of muscle biopsies in pediatric cases presenting with neuromuscular disease – analysis of 720 cases from a single center
Seyda Erdogan (Adana/TR)
- eP-MN-A282 MxA upregulation in smooth muscle – a case report of gastrointestinal perforation in NXP-2-Dermatomyositis
Mingshi Gao (Shanghai/CN)
- eP-MN-A283 Differential resorption pathways of chitosan and collagen nerve tubes
Ralf Schober (Leipzig/DE)
- eP-MN-A285 Evaluation of clinicopathological and genetic spectrum of LAMA2 mutations in an Indian cohort
Saransh Kanaujia (New Delhi/IN)

Epilepsy

- PS4-EP-A292 Mild malformations of cortical development with oligodendroglial hyperplasia in epilepsy (MOGHE) and with pathogenic SLC35A2 mutations reveal aberrant protein distribution and myelin loss
Erica Cecchini (Erlangen/DE)
- PS4-EP-A293 Patterns of pTau in focal cortical dysplasia type III and acquired lesions in an epilepsy surgical series
Alicja Mrzygłod (London/UK)
- PS4-EP-A294 IGF-1R expression is associated with memory performance in patient with temporal lobe epilepsy and type 2 hippocampal sclerosis
Jose Eduardo Peixoto-Santos (Sao Paulo/BR)
- PS4-EP-A295 White matter microvasculature in temporal lobe epilepsy and neurite orientation dispersion and density imaging (NODDI) correlations
Maria Thom (London/UK)
- PS4-EP-A296 Epileptogenic lesions with predilection for white matter involvement
Dimitar Metodiev (Sofia/BG)
- PS4-EP-A297 Synapse-specific changes in Arc and BDNF in rat hippocampus following chronic temporal lobe epilepsy
Daniel Lawer EUKenya (Cape Coast/GH)
- PS4-EP-A298 Mild malformation of cortical development with oligodendroglial hyperplasia in epilepsy (MOGHE) and a brain lesion histologically identical to MOGHE in a clinically non-epilepsy patient
Hajime Miyata (Akita City/JP)
- PS4-EP-A299 Epileptic seizures revealing Sturge Weber's disease in a tropical environment – study of eight cases
Souleymane Mbara Diallo (Conakry/GN)

- eP-EP-A300 A deep learning-based histopathology classifier for Focal Cortical Dysplasia
Jörg Vorndran (Erlangen/DE)
- eP-EP-A301 The effects of chronic morphine administration on kindling-induced epileptiform activity in hippocampal CA1 pyramidal neurons of male Wistar rats
Marjan Abdollahzade (Tabriz/IR)
- eP-EP-A302 Hippocampal T2 relaxation correlates with the levels of functional astroglial proteins in patients with mesial temporal lobe epilepsy
Jose Eduardo Peixoto-Santos (Sao Paulo/BR)
- eP-EP-A303 Retrospective cohort study of 2068 patients with drug-resistant epilepsy – etiology analysis
Jinmei Li (Chengdu/CN)
- eP-EP-A304 Hyaline eosinophilic astrocytic inclusions in two children with drug-resistant epilepsy – case reports and literature review
Monica Mezmezian (Buenos Aires/AR)
- eP-EP-A305 Validation of the Georgian version of the Stigma-Scale of Epilepsy (SSE)
Marina Lazariashvili (Tbilisi/GE)
- eP-EP-A306 Similar frequency of depression in patients with temporal lobe epilepsy and different types of hippocampal sclerosis
Jose Eduardo Peixoto-Santos (Sao Paulo/BR)
- eP-EP-A307 Data of misdiagnoses of transient conditions – study in Georgia
Ketevan Khomeriki (Tbilisi/GE)
- eP-EP-A308 Activation of the Reelin/GSK-3 β /p-Tau signaling pathway in the hippocampus of patients with temporal lobe epilepsy
Yue-Shan Piao (Beijing/CN)
- eP-EP-A309 Prevalence of seizure disorders in patients with glial tumours – a study from Saudi Arabia
Alaa Alkhotani (Makkah/SA)
- eP-EP-A310 Valproate as antioxidant factor in Mexican children
Eduardo Beltran Sarmiento (Cuauhtemoc/MX)

Other fields of neuropathology or method development

- PS10-OT-A320 Dual correlative light and electron microscopy (CLEM) of human autopsy specimens by gold enhancement of quantum dots
Toshiki Uchihara (Tokyo/JP)



Official Organ of the
European Confederation
of Neuropathological
Societies

clinical neuropathology



www.dustri.com

www.clinneuropathol.com

Internationally acclaimed
evidence-based medical research



- Clinical studies, case reports, real-world evidence, editorials and expert opinions
- Peer-reviewed medical journal, 6 issues per year, print and online
- State-of-the-art special issues
- Editor-in-chief: Christian Mawrin, Germany, secretary

general of DGNN and EANO executive board member

- Free online archive for subscribers
- No processing fee, no page charges for authors
- Fun feature: Medical quiz
- Visit us at www.clinneuropathol.com for all the information you need!

- PS10-OT-A321 On the structure and microenvironment of cortical microvascular “raspberries” and their association with major neurocognitive disorders – a histopathological and immunohistochemical study
Henric Ek Olofsson (Lund/SE)
- PS10-OT-A322 A case of AL amyloidosis died from intracranial hemorrhage
Yasuhiro Ito (Toyota/JP)
- PS10-OT-A323 Chiari anomalies – what are they?
Akira Hori (Hannover/DE)
- PS10-OT-A324 Tumefactive centrum semiovale and splenium demyelination in a case of suspected Perrault syndrome type 3
Josh Klonoski (Spokane Valley, WA/US)
- PS10-OT-A325 Spinal calcifying pseudoneoplasm of the neuraxis (CAPNON) associated with facet joint pathology
Faiha Fareez (Hamilton, ON/CA)
- PS10-OT-A326 A quality improvement project on the collection and process of cerebrospinal fluid (CSF) for cytology
Alan King Lun Liu (Oxford/UK)
- S14-OT-A327 Conumee 2.0 – enhanced copy-number variation analysis from DNA methylation arrays for humans and mice
Bjarne Daenekaas (Boston, MA/US)
- S14-OT-A328 Detection of structural DNA variations in pediatric brain tumors using optical genome mapping
Nadezhda (Nadja) Kubon (Duesseldorf/DE)
- eP-OT-A329 Migration disorder of the cerebral cortex caused by coactivation of LIN28A and CTNNB1 in neural precursor cells
Jelena Navolic (Hamburg/DE)
- eP-OT-A330 Protein malnutrition during gestation or early postnatal period is associated with reduced dendritic spine density and increased markers of synaptic pruning in Wistar rats
Jose Eduardo Peixoto-Santos (Sao Paulo/BR)
- eP-OT-A331 An autopsy report of a patient with simultaneous multiple hypertensive intracerebral hematomas (SMHICHs) in the left putamen and thalamus 11 years after the right putaminal hemorrhage
Shigeki Takeda (Niigata/JP)
- eP-OT-A332 Age-related increase in white matter vascular bagging independently from Alzheimer-related pathology
Deniz Yilmazer-Hanke (Ulm/DE)
- eP-OT-A333 Establishment of Brain Bank for Neurodevelopmental, Neurological and Psychiatric Disorders (BBNPD), Osaka in collaboration with Brain Bank for Aging Research (BBAR), Tokyo, Japan
Shigeo Murayama (Osaka/JP)

Wednesday, 13th September

10:45–12:15 **Closed Meeting – ISN Council and Exec Meeting**
 Room Expertisium (Ground floor) – meeting room, 40 seats

15:30–19:00 **Closed Meeting – Euro-CNS Executive meeting**
 Room Paul Ehrlich (4th floor) – resting/quiet room

Thursday, 14th September

08:30–10:30 **Closed Meeting – EURO-CNS council meeting**
 Room Expertisium (Ground floor) – meeting room, 40 seats

12:30–13:45 **Deutsche Forschungsgemeinschaft (DFG) – Einzelberatung/ Individual consultation**
 Room Paul Ehrlich (4th floor) – resting/quiet room
Book your appointment here:
<https://terminplaner6.dfn.de/p/4ce25956a4ba3abbc7a990fcda534518-355320>

13:45–15:15 **Closed Meeting – cIMPACT Steering Committee meeting**
 Room Expertisium (Ground floor) – meeting room, 40 seats

15:45–17:15 **Meeting – NATON Get Together**
 Room Expertisium (Ground floor) – meeting room, 40 seats

17:30–18:30 **General Assembly Scandinavian Neuropathology Society**
 Room Expertisium (Ground floor) – meeting room, 40 seats

19:00–20:30 **Closed Meeting – DGNN annual meeting**
 Room Bernhard von Langenbeck (1st floor) – small auditorium, 90 seats

19:00–20:30 **Closed meeting – Brain Pathology Editorial Board Meeting**
 Room Expertisium (Ground floor) – meeting room, 40 seats

Social program

Welcome Reception

Wednesday, 13th September | 18:30–20:00

Place Foyer/Industrial exhibition

Costs registration required, included for congress participants (for accompanying persons EUR 20)

Come together over drinks and vegetarian snacks to enjoy the first evening of the congress in a very special atmosphere. Get in the mood for the ICN 2023 at the welcome reception in the industrial exhibition. Allow yourself interesting conversations with colleagues, old friends and meet new acquaintances.



© Rawpixel.com | AdobeStock



Social Evening

Friday, 15th September

20:00–01:00, Admission from 19:30

Place Restaurant "HABEL am Reichstag"
Luisenstraße 19, 10117 Berlin

The full dinner tickets are sold out. There are only a few "Band & Drinks" tickets left and available.

Band & Drinks tickets

22:30–01:00, Admission from 22:15

Costs EUR 48 regular, EUR 25 reduced*

For the social evening of the conference, we cordially invite you to the Restaurant "HABEL am Reichstag". The HABEL stands for a timeless idea since 1779: the loving combination of exquisite wines and home-style regional cuisine in an uncomplicated and hospitable atmosphere.

Experience an evening as diverse as Berlin – Vegetarian German cuisine with tastefully modernised classics and savoury new interpretations, tasty drinks, the opportunity for quiet conversation as well as dance and music. To the sounds of music by the band Caramel Club you can enjoy an evening in a place with a centuries-long, eventful history.

*Applies to the participant types "Students, Residents, PhD students" and "Participants from CDE"

We thank the following companies for their support:

ABclonal Germany GmbH

Biotrend Chemikalien GmbH

BIOZOL Diagnostica Vertrieb GmbH

College of American Pathologists

Eurofins Genomics Germany GmbH

Invenio Imaging Inc.

KEYENCE DEUTSCHLAND GmbH

Novartis Pharma GmbH

Oxford Nanopore Technologies

Proteintech Germany GmbH

Qualitätssicherungs-Initiative Pathologie QuIP GmbH

Standard BioTools GmbH

Vizgen

ZEISS

Industrial Symposium – Oxford Nanopore Technologies

Friday, 15th September – 12:35-13:35

Transforming the future of healthcare, one nanopore at a time

Room Bernhard von Langenbeck (1st floor) – small auditorium, 90 seats

12:35 Welcome and overview from ONT

12:45 Rapid intraoperative diagnostics during brain tumor resection using nanopore sequencing
Einar Vik-Mo (Oslo/NO)

13:05 Implementation of Nanopore sequencing in routine CSF diagnostics
Ulrich Schüller (Hamburg/DE)

13:25 Q & A

Transparency

Congress organisers are obliged to inform potential congress participants, in advance, about the scope and terms of the support of the pharmaceutical industry (FSA). We fulfil this obligation and therefore inform you about the amount of the sponsorship of companies involved as well as the companies that voluntarily wish to publish: ABclonal Germany GmbH EUR 3,000 | Biotrend Chemikalien GmbH EUR 2,000 | BIOZOL Diagnostica Vertrieb GmbH EUR 2,000 | College of American Pathologists EUR 2,500 | Eurofins Genomics Germany GmbH EUR 2,500 | Invenio Imaging Inc. EUR 2,500 | KEYENCE DEUTSCHLAND GmbH EUR 1,250 | Novartis Pharma GmbH EUR 3,000 | Oxford Nanopore Technologies EUR 8,000 | Proteintech Germany GmbH EUR 1,800 | Qualitätssicherungs-Initiative Pathologie QuIP GmbH EUR 1,100 | Standard BioTools GmbH EUR 2,000 | Vizgen EUR 2,500 | ZEISS EUR 2,000

Supporter

Deutsche Forschungsgemeinschaft (DFG)

DFG Deutsche
Forschungsgemeinschaft

Deutsche Gesellschaft für Muskelkranke

 **DGM**
Deutsche Gesellschaft
für Muskelkranke e. V.

Media cooperations

Biomedicines/MDPI

brain sciences/MDPI

Free Neuropathology/Universität Münster

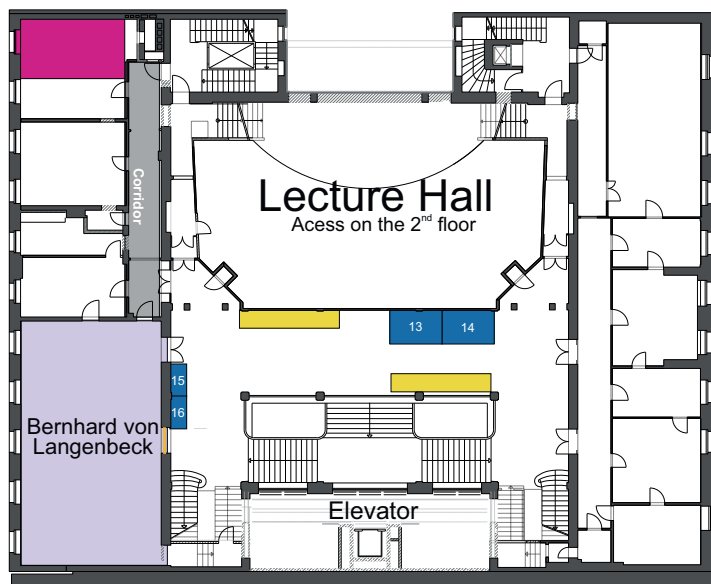
State at 6 September 2023

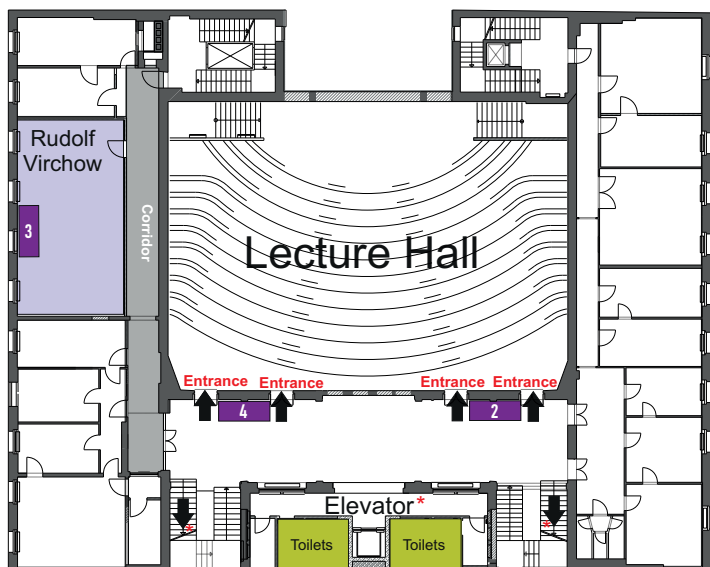
Ground floor



*ePoster sessions only, no self study

1st floor



2nd floor

* The 3rd, 4th and 5th floor can best be reached by elevator, but by stairs as well. The entrance to the gallery of the lecture hall is on the 3rd floor.

ePoster station 5 and the room Paul Ehrlich (resting/quiet room) can be found on the 4th floor.

The Education Day (12th September) takes place on the 5th floor.

Booth Nr.	Exhibitor
1	Oxford Nanopore Technologies
2	Novartis Pharma GmbH
3	BIOZOL Diagnostica Vertrieb GmbH
4	College of American Pathologists
5	Eurofins Genomics Germany GmbH
6	Invenio Imaging Inc.
7	Abclonal Germany GmbH
8	Vizgen
9	Biotrend Chemikalien GmbH
10	Proteintech Germany GmbH
11	Standard Bio Tools GmbH
12	ZEISS
13	KEYENCE DEUTSCHLAND GmbH
14	-
15	Euro-CNS
16	BRAIN UK

Industrial exhibition

Catering

Self Check-In

Check-In

Certification

Media Check-In

ePoster stations

ePoster station 1 is the room Expertisium (ground floor)

ePoster station 5 can be found on the 4th floor

General information



Registration

Please register online at www.icn2023.de. There you can find all information on registration fees, payment and confirmation of payment as well as the general terms and conditions.



Badges

Access to all scientific sessions and to the exhibition is only possible with your personal name badge, which you will receive at the Check-In desk. All participants are requested to wear their badges throughout the congress.



Check-In, Cloakroom and Media Check-In

Check-In and cloakroom are located on the ground floor of the congress venue. You can leave your jacket and luggage free of charge at the cloakroom. The Media Check-In is located on the 1st floor (room Werner Körte).



Opening hours

	Check-In	Media Check-In	Cloakroom
Wed, 13 Sept	08:00–19:00	08:00–17:30	08:00–20:15
Thurs, 14 Sept	08:00–19:15	08:00–18:30	08:00–20:45
Fri, 15 Sept	08:00–19:00	08:00–18:30	08:00–19:15
Sat, 16 Sept	08:00–13:00	08:00–12:00	08:00–13:15



Industrial exhibition

Wed, 13 Sept	12:00–20:00
Thurs, 14 Sept	09:00–19:00
Fri, 15 Sept	09:00–19:00
Sat, 16 Sept	09:00–12:00



CME credits

For certification, participants are kindly required to scan their QR code daily on site at the certification desk. The CME credits are automatically transferred to the State Chamber of Physicians Berlin.

Participation in the ICN 2023 is certified by the State Chamber of Physicians Berlin as follows:

Education Day 12 th September 2023	Category B	3 points
Wednesday 13 th September	Category B	6 points
Thursday 14 th September	Category B	6 points
Friday 15 th September	Category B	6 points
Saturday 16 th September	Category B	3 points

The Education Day – 20th International Congress of Neuropathology, Berlin, Germany, 12/09/2023–12/09/2023 has been accredited by the European Accreditation Council for Continuing Medical Education (EACCME®) with 7 European CME credits (ECMEC®s). Each medical specialist should claim only those hours of credit that he/she actually spent in the educational activity.

The 20th International Congress of Neuropathology (ICN 2023), Berlin, Germany, 13/09/2023–16/09/2023 has been accredited by the European Accreditation Council for Continuing Medical Education (EACCME®) with 22 European CME credits (ECMEC®s). Each medical specialist should claim only those hours of credit that he/she actually spent in the educational activity.



Internet

Free Wi-Fi is available in the Langenbeck-Virchow House.



Abstracts

All accepted abstracts will be published online in the journal Brain Pathology by Wiley Publishing.



Catering

Vegetarian food and drinks will be served free of charge in the exhibition during official break times (see program).

General information for digital participation



Availability of content

Please note that there are parts of the program that will **not** be streamed via the digital congress platform (e. g. Education Day, EVEREST Pre-Congress Symposium, social program, ePoster sessions, meetings) and that the congress will take place live in Berlin – therefore according to the Central European Summer Time (CEST).



Helpdesk

In case of questions, technical issues etc. during the congress, you can contact the helpdesk directly via the chat icon on the digital congress platform www.icn2023-digital.com at the helpdesk opening hours. The opening hours can also be found on the digital congress platform. Please note that the program will take place live in Berlin and thus at Central European Summer Time. The helpdesk will also only be available according to these times.



Log-in on the digital congress platform

You can access the digital congress platform via www.icn2023-digital.de. On the starting page you can register for the congress at any time by clicking on “Buy Conference Ticket”. If you have already registered, you can reach the login portal of the congress by clicking “Login”. This will allow you to access the hybrid ICN 2023.

Your personal access data to the digital congress platform will be sent out via e-mail on 12th September, 12:00 (CEST).



On demand – congress material

Congress material will be available for you after the event at icn2023-digital.de. You can then view the majority of congress materials individually until 22th October 2023. Please remember that it is subject to the speakers permission whether their presentations will be available on demand after the congress. This may lead to gaps within the program. Please also note that visiting the on demand area after the congress is not certified (regarding CME credits).

Please note: All sessions will be streamed live. They have to be edited after the congress, which takes about a week. After this, most materials will be made available in the on demand area.



Technical requirements

To ensure the best possible transmission quality and stability, the use of a direct LAN connection (as opposed to WiFi) is recommended. Before the meeting, make sure that sound and video quality of your computer/notebook is good.

Make sure that you are using the latest version of your browser. Using Internet Explorer as your browser is not recommended. Also make sure that you do not have too many tabs open in your browser.

More information on digital participation can be found in the FAQ for the digital ICN 2023 at <https://icn2023.de/the-digital-icn-2023/faq>.



ABclonal Technology is an innovative growth company that provides high-quality biology research reagents, tools, and custom services. Since its establishment in 2011, ABclonal has set up R&D centers in Boston, Shanghai, Wuhan, and direct sales office in the US, China, UK, Germany, South Korea, and Japan.

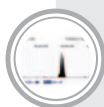
ABclonal SMab™ Single B Cell Antibody Development Platform

The SMab™ platform is a single B-cell-based monoclonal antibody discovery platform. ABclonal has over 10 years of experience in producing antibodies for research and drug discovery needs. We also offer complete custom services from antigen design and synthesis to antibody characterization and have provided services to life science researchers, IVD, and pharmaceutical companies worldwide. To date, our expert scientists have successfully produced more than 10000 high-quality antibodies using our SMab™ platform.

ABclonal Antibody Validation Strategies

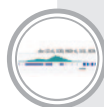
- Binary Model
- Multiple Antibodies
- Complementary Assays
- Ranged Expression
- Heterologous Expression

Featured Validation Strategies



ChIP-seq Validation Platform

Combining ChIP and high-throughput sequencing technology to deeply analyze the regulatory network of DNA-protein interaction.



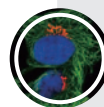
Cut&Tag Validation Platform

Optimized and innovative epigenetics research technique, complement with ChIP-seq.



KO Validation Platform

Abundant KO samples ensure the antibody specificity and reproducibility.



Confocal Microscopy Validation Platform

High-resolution microscopic imaging technology, a powerful tool for protein subcellular localization research.

Invited speakers

Academic titles are listed based on information from the participant or their institution.

Prof. Homa Adle-Biasette, MD, PhD, Lariboisière Hospital, Pathology, Paris/FR

Kenneth Aldape, MD, National Institutes of Health (NIH), Bethesda, MD/US

Prof. Maysa Al-Hussaini, King Hussein Cancer Center, Pathology and Laboratory Medicine, Amman/JO

Prof. Yves Allenbach, MD, PhD, Public Assistance – Paris Hospitals, Paris/FR

Glenn Anderson, MSc, FIBMS, Great Ormond Street Hospital, Histopathology, London/UK

Prof. Eleonora Aronica, MD, PhD, Amsterdam AMC, Pathology, Amsterdam/NL

Prof. Pratiti Bandopadhyay, MBBS, PhD, Harvard Medical School, Dana-Farber Cancer Institute, Boston, MA/US

Prof. Nandeesh Bevinahall Nanjegowda, MD, DNB, National Institute of Mental Health and Neurosciences (NIMHANS), Department of Neuropathology, Bangalore/IN

Prof. Dr. Ingmar Blümcke, University Hospital Erlangen, Neuropathology, Erlangen/DE

Carsten Bönemann, MD, HABIL, National Institutes of Health (NIH), Bethesda, MD/US

Prof. Michael Buckland, MBBS, PhD, The University of Sidney, Pathology, Sydney/AU

Prof. Dr. David Capper, Charité – Universitätsmedizin Berlin, Department of Neuropathology, Berlin/DE

Prof. Kristl Claeys, MD, PhD, University Hospital Leuven, Neurology, Leuven/BE

Prof. Bart De Strooper, MD, PhD, KU Leuven & VIB, Center for Brain & Disease Research, Leuven/BE

Dr. Carsten Dittmayer, Charité – Universitätsmedizin Berlin, Department of Neuropathology, Berlin/DE

Dr. Philipp Euskirchen, Charité – Universitätsmedizin Berlin, Department of Neurology, Berlin/DE

PD Dr. Pawel Fidzinski, Charité – Universitätsmedizin Berlin, NeuroCure Cluster of Excellence, NCRC, Berlin/DE

Laure Gallay, MD, PhD, Hospices Civils de Lyon, Clinical immunology, Lyon/FR

PD Dr. Ellen Gelpi, Medical University of Vienna, Division of Neuropathology and Neurochemistry
Department of Neurology, Vienna/AT

Prof. Dr. Markus Glatzel, University Hospital of Hamburg-Eppendorf, Department of Neuropathology, Hamburg/DE
Dr. Linus Haberbosch, Charité – Universitätsmedizin Berlin, Medizinische Klinik für Endokrinologie und Stoffwechselmedizin, Berlin/DE
Adam Handel, BM BCh Dphil, University of Oxford, Nuffield Department of Clinical Neurosciences, Oxford/UK
Prof. em. Brian Harding, BM DPhil FRCPath, University of Pennsylvania, Philadelphia, PA/US
Prof. Dr. Romana Höftberger, Medical University of Vienna, Division of Neuropathology and Neurochemistry, Department of Neurology, Vienna/AT
Jason Huse, MD, PhD, University of Texas MD Anderson Cancer Center Pathology and Translational Molecular Pathology, Houston, TX/US
Prof. Bradley Hyman, MD, PhD, Harvard University, Massachusetts General Hospital, Boston, MA/US
Prof. Tom Jacques, University College London, London/UK
Dr. Sarah Jäkel, University Hospital Munich, Munich/DE
David T. W. Jones, PhD, University Hospital Heidelberg Hopp Children's Tumour Centre Heidelberg (KiTZ) Heidelberg/DE
Dr. Dr. Max Kaufmann, University of Hamburg Center for Molecular Neurobiology Hamburg (ZMNH), Hamburg/DE
Olfat Khdair-Ahmad, MD, DKFZ German Cancer Research Center, Heidelberg/DE
Dr. Arend Koch, Charité – Universitätsmedizin Berlin, Department of Neuropathology, Berlin/DE
Daniela Kocher, PhD, DKFZ German Cancer Research Center, Pediatric Oncology, Heidelberg/DE
Takashi Komori, MD, PhD, Tokyo Metropolitan Neurological Hospital Department of Laboratory Medicine and Pathology, Neuropathology, Tokyo/JP
Dr. Michael Laue, Robert Koch Institute, Advanced Light and Electron Microscopy, Berlin/DE
Keith L. Ligon, MD, PhD, Harvard University, Dana-Farber Cancer Institute, Boston, MA/US
Prof. Maria-Beatriz Lopes, MD, PhD, University of Virginia, Pathology, Charlottesville, VA/US

Prof. David Louis, MD, Harvard University, Massachusetts General Hospital, Cambridge, MA/US

Prof. Ian MacKenzie, MD, University of British Columbia, Pathology, Vancouver, BC/CA

Prof. Anita Mahadevan, MD, National Institute of Mental Health and Neurosciences (NIMHANS)
Department of Neuropathology, Bangalore/IN

Prof. Dr. Christian Mawrin, Otto-von-Guericke-University, Institute of Neuropathology, Magdeburg/DE

Prof. Dr. Michel Mittelbronn, National Health Laboratory (LNS)
Luxembourg Centre of Neuropathology (LCNP), Dudelange/LU

Prof. Thomas J. Montine, MD, PhD, Stanford University, Stanford, CA/US

Prof. Steven Moore, MD, PhD, University of Iowa, Iowa City, IA/US

Prof. Dr. Manuela Neumann, University Hospital Tuebingen, Department of Neuropathology, Tuebingen/DE

Ichizo Nishino, MD, PhD, National Institute of Neuroscience
National Center of Neurology and Psychiatry Department of Neuromuscular Research, Tokyo/JP

Prof. Dr. Matthias Ochs, Charité – Universitätsmedizin Berlin, Institute of Functional Anatomy, Berlin/DE

Prof. Piero Parchi, MD, PhD, University of Bologna
Department of Biomedical and Neuromotor Sciences, Bologna/IT

Ashwyn Augustine Perera, MD, DKFZ German Cancer Research Center, Heidelberg/DE

Prof. Margaret A. Pericak-Vance, PhD, University of Miami, Miller School of Medicine
John P. Hussman Institute for Human Genomics, Miami, FL/US

Steven Proulx, PhD, University of Bern, Theodor Kocher Institute (TKI), Bern/CH

Richard M. Ransohoff, MD, Third Rock Ventures, Boston, MA/US

Prof. Dr. Andreas Roos, University Hospital Essen, Pediatric Neurology, Essen/DE

Dr. Agnieszka Rybak-Wolf, Max Delbrück Center for Molecular Medicine,
Berlin Institute for Medical Systems Biology, Berlin/DE

Prof. Dr. Dr. Felix Sahn, University Hospital Heidelberg, Institute of Pathology, Neuropathology, Heidelberg/DE

Prof. Vani Santosh, MD, National Institute of Mental Health and Neurosciences (NIMHANS)
Department of Neuropathology, Bangalore/IN

Prof. Chitra Sarkar, MD, All India Institute of Medical Sciences, Pathology, New Delhi/IN

Dr. Simone Schmid, Charité – Universitätsmedizin Berlin, Department of Neuropathology, Berlin/DE

PD Dr. Leonille Schweizer, University of Frankfurt am Main, Edinger Institute, Institute of Neurology, Frankfurt a. M./DE

Prof. Denise Sheer, BSc, BSc(Hons), D.Phil., Queen Mary University of London
Centre for Genomics and Child Health, London/UK

Prof. Colin Smith, MD FRCPath, The University of Edinburgh, Academic Neuropathology, Edinburgh/UK

Prof. Dr. Christine Stadelmann, University Medical Center Goettingen, Goettingen/DE

Prof. Dr. Werner Stenzel, Charité – Universitätsmedizin Berlin, Department of Neuropathology, Berlin/DE

Prof. Dr. Vaishali Suri, All India Institute Of Medical Sciences
Neurosciences Center, Neuropathology, New Delhi/IN

Masaki Takao, MD, PhD, National Center Hospital, National Center of Neurology and Psychiatry, Tokyo/JP

Bastiaan Tops, PhD, Princess Maxima Center for pediatric oncology, Diagnostics, Utrecht/NL

Prof. em. Jean-Michel Vallat, University hospital Limoges, Neurology, Limoges/FR

Prof. Dr. Andreas von Deimling, Universität Heidelberg/Deutsches Krebsforschungszentrum
Abt. für Neuropathologie/KKE Neuropathologie, Heidelberg/DE

Dr. Katja von Hoff, University Hospital Aarhus, Paediatrics, Aarhus/DK

Lauren Walker, PhD, MRes, BSc (Hons), Newcastle University, Newcastle upon Tyne/UK

Prof. Dr. Joachim Weis, University Hospital Aachen, Department of Neuropathology, Aachen/DE

Prof. Pieter Wesseling, MD, PhD, Amsterdam University Medical Center, Pathology, Amsterdam/NL

Prof. Jing Zhang, MD, PhD, The First Affiliated Hospital of Zhejiang University and School of Medicine,
Pathology, Hangzhou/CN

Prof. Homa Adle-Biasette, MD, PhD, Lariboisière Hospital, Pathology, Paris/FR

Prof. Eleonora Aronica, MD, PhD, Amsterdam AMC, Pathology, Amsterdam/NL

Prof. Dr. Ingmar Blümcke, University Hospital Erlangen, Neuropathology, Erlangen/DE

Prof. Dr. David Capper, Charité – Universitätsmedizin Berlin, Department of Neuropathology, Berlin/DE

Prof. Dr. Dr. Hans-Hilmar Goebel, Charité – Universitätsmedizin Berlin, Department of Neuropathology, Berlin/DE

Prof. Dr. Frank Heppner, Charité – Universitätsmedizin Berlin, Department of Neuropathology, Berlin/DE

Dr. Arend Koch, Charité – Universitätsmedizin Berlin, Department of Neuropathology, Berlin/DE

Prof. Thomas J. Montine, MD, PhD, Stanford University, Stanford, CA/US

Prof. Anita Mahadevan, MD, National Institute of Mental Health and Neurosciences (NIMHANS)
Department of Neuropathology, Bangalore/IN

Prof. Dr. Manuela Neumann, University Hospital Tuebingen, Department of Neuropathology, Tuebingen/DE

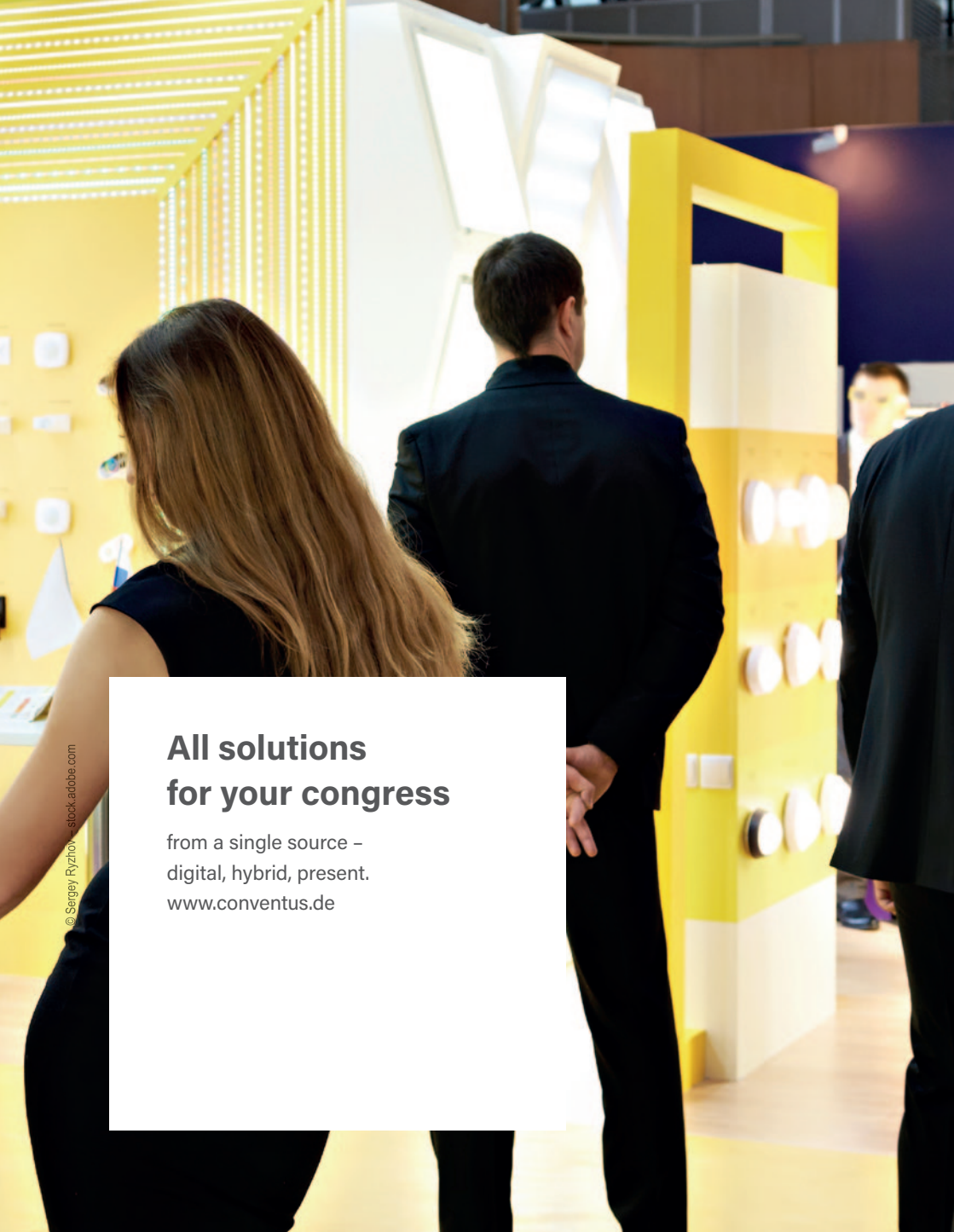
Dr. Helena Radbruch, Charité – Universitätsmedizin Berlin, Department of Neuropathology, Berlin/DE

Dr. Simone Schmid, Charité – Universitätsmedizin Berlin, Department of Neuropathology, Berlin/DE

Prof. Dr. Christine Stadelmann, University Medical Center Göttingen, Goettingen/DE

Prof. Dr. Werner Stenzel, Charité – Universitätsmedizin Berlin, Department of Neuropathology, Berlin/DE

Prof. Pieter Wesseling, MD, PhD, Amsterdam University Medical Center, Pathology, Amsterdam/NL



© Sergey Ryzhov - stock.adobe.com

All solutions for your congress

from a single source –
digital, hybrid, present.
www.conventus.de